

Anti-SLC25A20 antibody (1-301) (STJ28960)

STJ28960

GENERAL INFORMATION

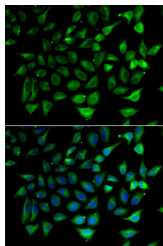
Product Type	Primary antibodies
Short Description	Rabbit polyclonal antibody anti-SLC25A20 (1-301) is suitable for use in Immunofluorescence.
Applications	IF
Host/Source	Rabbit
Reactivity	Human

PRODUCT PROPERTIES

Clonality	Polyclonal
Clone ID	
Concentration	
Conjugation	Unconjugated
Purification	Affinity purification
Dilution Range	IF 1:50-1:100
Formulation	PBS containing 0.02% Sodium Azide, 50% Glycerol, pH7.3.
Isotype	IgG
Storage Instruction	Store in a freezer at -20°C and avoid freeze-thaw cycles.

TARGET INFORMATION

Gene ID	788
Gene Symbol	SLC25A20
Uniprot ID	MCAT_HUMAN
Immunogen	Recombinant fusion protein containing a sequence corresponding to amino acids 1-301 of human SLC25A20 (NP_000378.1).
Immunogen Region	1-301
Specificity	
Immunogen Sequence	



Immunofluorescence analysis of HeLa cells using SLC25A20 antibody (STJ28960). Blue: DAPI for nuclear staining.

This product is suitable for in-vitro studies under the RESEARCH USE ONLY [RUO] licence. This product must not be used as for diagnostic or other medical purposes.
St John's Laboratory Ltd, Knowledge Dock Business Centre, University Way, London, E16 2RD | Tel: 0208 223 3081