

Anti-ASPH antibody (81-270) (STJ28953)

STJ28953

GENERAL INFORMATION

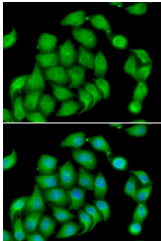
Product Type	Primary antibodies
Short Description	Rabbit polyclonal antibody anti-ASPH (81-270) is suitable for use in Western Blot and Immunofluorescence.
Applications	WB, IF
Host/Source	Rabbit
Reactivity	Human

PRODUCT PROPERTIES

Clonality	Polyclonal
Clone ID	
Concentration	
Conjugation	Unconjugated
Purification	Affinity purification
Dilution Range	WB 1:500-1:2000 IF 1:50-1:100
Formulation	PBS containing 0.02% Sodium Azide, 50% Glycerol, pH7.3.
Isotype	IgG
Storage Instruction	Store in a freezer at -20°C and avoid freeze-thaw cycles.

TARGET INFORMATION

Gene ID	444
Gene Symbol	ASPH
Uniprot ID	ASPH_HUMAN
Immunogen	Recombinant fusion protein containing a sequence corresponding to amino acids 81-270 of human ASPH (NP_001158227.1).
Immunogen Region	81-270
Specificity	
Immunogen Sequence	



Immunofluorescence analysis of HeLa cells using ASPH antibody (STJ28953). Blue: DAPI for nuclear staining.

This product is suitable for in-vitro studies under the RESEARCH USE ONLY [RUO] licence. This product must not be used as for diagnostic or other medical purposes.
St John's Laboratory Ltd, Knowledge Dock Business Centre, University Way, London, E16 2RD | Tel: 0208 223 3081