

Anti-XPO5 antibody (925-1204) (STJ28873)

STJ28873

GENERAL INFORMATION

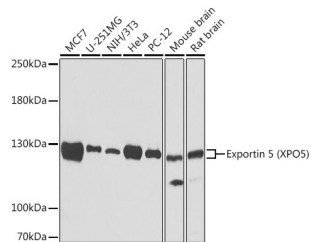
Product Type	Primary antibodies
Short Description	Rabbit polyclonal antibody anti-XPO5 (925-1204) is suitable for use in Western Blot, Immunohistochemistry, Immunofluorescence and Immunoprecipitation.
Applications	WB, IHC, IF, IP
Host/Source	Rabbit
Reactivity	Human, Mouse, Rat

PRODUCT PROPERTIES

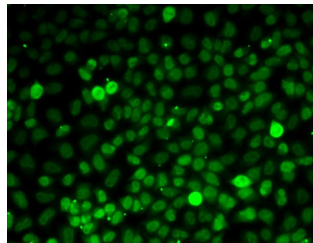
Clonality	Polyclonal
Clone ID	
Concentration	
Conjugation	Unconjugated
Purification	Affinity purification
Dilution Range	WB 1:500-1:2000 IHC 1:50-1:200 IF 1:50-1:100 IP 1:50-1:200
Formulation	PBS containing 0.02% Sodium Azide, 50% Glycerol, pH7.3.
Isotype	IgG
Storage	Store in a freezer at -20°C and avoid freeze-thaw cycles.
Instruction	

TARGET INFORMATION

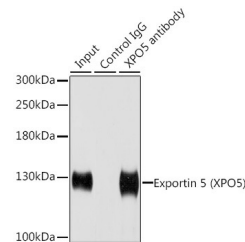
Gene ID	57510
Gene Symbol	XPO5
Uniprot ID	XPO5_HUMAN
Immunogen	Recombinant fusion protein containing a sequence corresponding to amino acids 925-1204 of human Exportin 5 (Exportin 5 (XPO5)) (NP_065801.1).
Immunogen Region	925-1204
Specificity	
Immunogen Sequence	



Western blot analysis of extracts of various cell lines, using Exportin 5 (Exportin 5 (XPO5)) antibody (STJ28873). Secondary antibody: HRP Goat Anti-rabbit IgG (H+L) at 1:10000 dilution. Lysates/proteins: 25µg per lane. Blocking buffer: 3% nonfat dry milk in TBST. Detection: ECL Basic Kit. Exposure time: 90s.



Immunofluorescence analysis of MCF7 cells using Exportin 5 (Exportin 5 (XPO5)) antibody (STJ28873).



Immunoprecipitation analysis of 200µg extracts of HeLa cells using 1µg Exportin 5 (Exportin 5 (XPO5)) antibody (STJ28873). Western blot was performed from the immunoprecipitate using Exportin 5 (Exportin 5 (XPO5)) antibody (STJ28873) at a dilution of 1:1000.

This product is suitable for in-vitro studies under the RESEARCH USE ONLY [RUO] licence. This product must not be used as for diagnostic or other medical purposes.
St John's Laboratory Ltd, Knowledge Dock Business Centre, University Way, London, E16 2RD | Tel: 0208 223 3081