

Anti-SMPD1 antibody (70-340) (STJ28826)

STJ28826

GENERAL INFORMATION

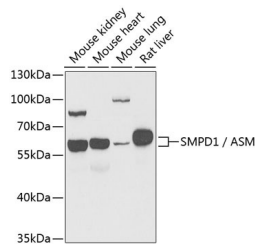
Product Type	Primary antibodies
Short Description	Rabbit polyclonal antibody anti-SMPD1/ASM (70-340) is suitable for use in Western Blot, Immunohistochemistry and Immunofluorescence.
Applications	WB, IHC, IF
Host/Source	Rabbit
Reactivity	Human, Mouse, Rat

PRODUCT PROPERTIES

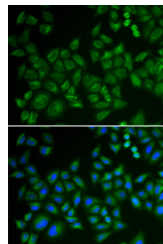
Clonality	Polyclonal
Clone ID	
Concentration	
Conjugation	Unconjugated
Purification	Affinity purification
Dilution Range	WB 1:500-1:2000 IHC 1:50-1:200 IF 1:10-1:100
Formulation	PBS containing 0.02% Sodium Azide, 50% Glycerol, pH7.3.
Isotype	IgG
Storage Instruction	Store in a freezer at -20°C and avoid freeze-thaw cycles.

TARGET INFORMATION

Gene ID	6609
Gene Symbol	SMPD1
Uniprot ID	ASM_HUMAN
Immunogen	Recombinant fusion protein containing a sequence corresponding to amino acids 70-340 of human SMPD1/ASM (NP_000534.3).
Immunogen Region	70-340
Specificity	
Immunogen Sequence	



Western blot analysis of extracts of various cell lines, using SMPD1/ ASM antibody (STJ28826) at 1:1000 dilution. Secondary antibody: HRP Goat Anti-rabbit IgG (H+L) at 1:10000 dilution. Lysates/proteins: 25ug per lane. Blocking buffer: 3% nonfat dry milk in TBST. Detection: ECL Basic Kit. Exposure time: 90s.



Immunofluorescence analysis of HeLa cells using SMPD1/ ASM antibody (STJ28826). Blue: DAPI for nuclear staining.