

## Anti-PPP2R1B antibody (468-667) (STJ28786)

STJ28786

### GENERAL INFORMATION

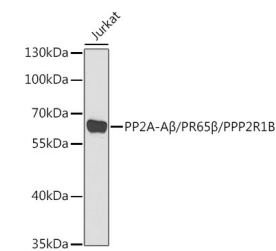
<b>Product Type</b>	Primary antibodies
<b>Short Description</b>	Rabbit polyclonal antibody anti-PPP2R1B (468-667) is suitable for use in Western Blot, Immunohistochemistry and Immunofluorescence.
<b>Applications</b>	WB, IHC, IF
<b>Host/Source</b>	Rabbit
<b>Reactivity</b>	Human, Mouse, Rat

### PRODUCT PROPERTIES

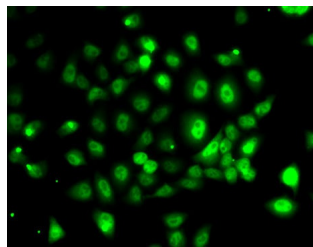
<b>Clonality</b>	Polyclonal
<b>Clone ID</b>	
<b>Concentration</b>	
<b>Conjugation</b>	Unconjugated
<b>Purification</b>	Affinity purification
<b>Dilution Range</b>	WB 1:500-1:2000 IHC 1:50-1:200 IF 1:50-1:100
<b>Formulation</b>	PBS containing 0.02% Sodium Azide, 50% Glycerol, pH7.3.
<b>Isotype</b>	IgG
<b>Storage Instruction</b>	Store in a freezer at -20°C and avoid freeze-thaw cycles.

### TARGET INFORMATION

<b>Gene ID</b>	5519
<b>Gene Symbol</b>	PPP2R1B
<b>Uniprot ID</b>	2AAB_HUMAN
<b>Immunogen</b>	Recombinant fusion protein containing a sequence corresponding to amino acids 468-667 of human PP2A-Abeta/PR65 Beta/PP2A-A Beta/PR65 Beta/PPP2R1B (NP_859050.1).
<b>Immunogen Region</b>	468-667
<b>Specificity</b>	
<b>Immunogen Sequence</b>	



Western blot analysis of extracts of Jurkat cells, using PP2A-Abeta/PR65 Beta/PP2A-A Beta/PR65 Beta/PPP2R1B antibody (STJ28786) at 1:1000 dilution. Secondary antibody: HRP Goat Anti-rabbit IgG (H+L) at 1:10000 dilution. Lysates/proteins: 25ug per lane. Blocking buffer: 3% nonfat dry milk in TBST. Detection: ECL Basic Kit. Exposure time: 90s.



Immunofluorescence analysis of MCF7 cells using PP2A-Abeta/PR65 Beta/PP2A-A Beta/PR65 Beta/PPP2R1B antibody (STJ28786).

This product is suitable for in-vitro studies under the RESEARCH USE ONLY [RUO] licence. This product must not be used as for diagnostic or other medical purposes.

St John's Laboratory Ltd, Knowledge Dock Business Centre, University Way, London, E16 2RD | Tel: 0208 223 3081