

Anti-PDLIM1 antibody (1-329) (STJ28769)

STJ28769

GENERAL INFORMATION

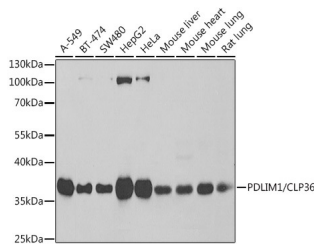
Product Type	Primary antibodies
Short Description	Rabbit polyclonal antibody anti-PDLIM1 (1-329) is suitable for use in Western Blot and Immunofluorescence.
Applications	WB, IF
Host/Source	Rabbit
Reactivity	Human, Mouse, Rat

PRODUCT PROPERTIES

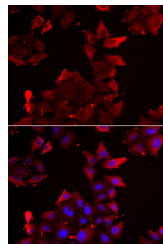
Clonality	Polyclonal
Clone ID	
Concentration	
Conjugation	Unconjugated
Purification	Affinity purification
Dilution Range	WB 1:500-1:2000 IF 1:10-1:100
Formulation	PBS containing 0.02% Sodium Azide, 50% Glycerol, pH7.3.
Isotype	IgG
Storage Instruction	Store in a freezer at -20°C and avoid freeze-thaw cycles.

TARGET INFORMATION

Gene ID	9124
Gene Symbol	PDLIM1
Uniprot ID	PDL1_HUMAN
Immunogen	Recombinant fusion protein containing a sequence corresponding to amino acids 1-329 of human PDLIM1/CLP36 (NP_066272.1).
Immunogen Region	1-329
Specificity	
Immunogen Sequence	



Western blot analysis of extracts of various cell lines, using PDLIM1/CLP36 antibody (STJ28769) at 1:1000 dilution. Secondary antibody: HRP Goat Anti-rabbit IgG (H+L) at 1:10000 dilution. Lysates/proteins: 25ug per lane. Blocking buffer: 3% nonfat dry milk in TBST. Detection: ECL Basic Kit. Exposure time: 1s.



Immunofluorescence analysis of U2OS cells using PDLIM1/CLP36 antibody (STJ28769). Blue: DAPI for nuclear staining.