

Anti-PDCD6 antibody (1-191) (STJ28768)

STJ28768

GENERAL INFORMATION

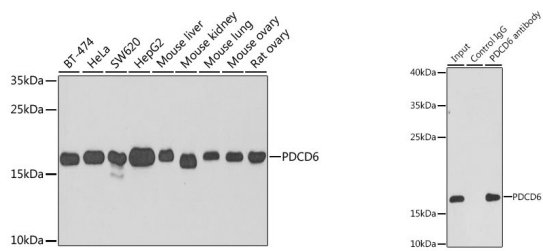
Product Type	Primary antibodies
Short Description	Rabbit polyclonal antibody anti-PDCD6 (1-191) is suitable for use in Western Blot, Immunohistochemistry, Immunofluorescence and Immunoprecipitation.
Applications	WB, IHC, IF, IP
Host/Source	Rabbit
Reactivity	Human, Mouse, Rat

PRODUCT PROPERTIES

Clonality	Polyclonal
Clone ID	
Concentration	
Conjugation	Unconjugated
Purification	Affinity purification
Dilution Range	WB 1:500-1:2000 IHC 1:50-1:200 IF 1:50-1:100 IP 1:50-1:200
Formulation	PBS containing 0.02% Sodium Azide, 50% Glycerol, pH7.3.
Isotype	IgG
Storage	Store in a freezer at -20°C and avoid freeze-thaw cycles.
Instruction	

TARGET INFORMATION

Gene ID	10016
Gene Symbol	PDCD6
Uniprot ID	PDCD6_HUMAN
Immunogen	Recombinant fusion protein containing a sequence corresponding to amino acids 1-191 of human PDCD6 (NP_037364.1).
Immunogen Region	1-191
Specificity	
Immunogen Sequence	



Western blot analysis of extracts of various cell lines, using PDCD6 antibody (STJ28768) at 1:1000 dilution. Secondary antibody: HRP Goat Anti-rabbit IgG (H+L) at 1:10000 dilution. Lysates/proteins: 25ug per lane. Blocking buffer: 3% nonfat dry milk in TBST. Detection: ECL Basic Kit. Exposure time: 90s.

Immunoprecipitation analysis of 200ug extracts of HepG2 cells, using 3 ug PDCD6 antibody (STJ28768). Western blot was performed from the immunoprecipitate using PDCD6 antibody (STJ28768) at a dilution of 1:1000.

This product is suitable for in-vitro studies under the RESEARCH USE ONLY [RUO] licence. This product must not be used as for diagnostic or other medical purposes.
St John's Laboratory Ltd, Knowledge Dock Business Centre, University Way, London, E16 2RD | Tel: 0208 223 3081