

Anti-CPSF3L antibody (331-600) (STJ28649)

STJ28649

GENERAL INFORMATION

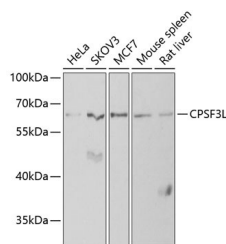
Product Type	Primary antibodies
Short Description	Rabbit polyclonal antibody anti-CPSF3L (331-600) is suitable for use in Western Blot, Immunofluorescence and Immunoprecipitation.
Applications	WB, IF, IP
Host/Source	Rabbit
Reactivity	Human, Mouse, Rat

PRODUCT PROPERTIES

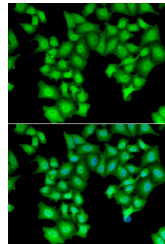
Clonality	Polyclonal
Clone ID	
Concentration	
Conjugation	Unconjugated
Purification	Affinity purification
Dilution Range	WB 1:500-1:2000 IF 1:10-1:100 IP 1:50-1:200
Formulation	PBS containing 0.02% Sodium Azide, 50% Glycerol, pH7.3.
Isotype	IgG
Storage Instruction	Store in a freezer at -20°C and avoid freeze-thaw cycles.

TARGET INFORMATION

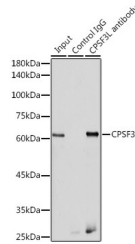
Gene ID	54973
Gene Symbol	INTS11
Uniprot ID	INT11_HUMAN
Immunogen	Recombinant fusion protein containing a sequence corresponding to amino acids 331-600 of human CPSF3L (NP_060341.2).
Immunogen Region	331-600
Specificity	
Immunogen Sequence	



Western blot analysis of extracts of various cell lines, using CPSF3L antibody (STJ28649) at 1:1000 dilution. Secondary antibody: HRP Goat Anti-rabbit IgG (H+L) at 1:10000 dilution. Lysates/proteins: 25µg per lane. Blocking buffer: 3% nonfat dry milk in TBST. Detection: ECL Basic Kit. Exposure time: 90s.



Immunofluorescence analysis of HeLa cells using CPSF3L antibody (STJ28649). Blue: DAPI for nuclear staining.



Immunoprecipitation analysis of 300µg extracts of HeLa cells using 3µg CPSF3L antibody (STJ28649). Western blot was performed from the immunoprecipitate using CPSF3L antibody (STJ28649) at a dilution of 1:500.

This product is suitable for in-vitro studies under the RESEARCH USE ONLY [RUO] licence. This product must not be used as for diagnostic or other medical purposes.
St John's Laboratory Ltd, Knowledge Dock Business Centre, University Way, London, E16 2RD | Tel: 0208 223 3081