

Anti-CLDN2 antibody (30-230) (STJ28643)

STJ28643

GENERAL INFORMATION

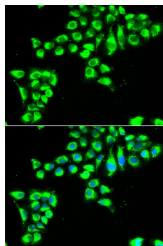
Product Type	Primary antibodies
Short Description	Rabbit polyclonal antibody anti-CLDN2 (30-230) is suitable for use in Immunofluorescence.
Applications	IF
Host/Source	Rabbit
Reactivity	Human

PRODUCT PROPERTIES

Clonality	Polyclonal
Clone ID	
Concentration	
Conjugation	Unconjugated
Purification	Affinity purification
Dilution Range	IF 1:50-1:100
Formulation	PBS containing 0.02% Sodium Azide, 50% Glycerol, pH7.3.
Isotype	IgG
Storage Instruction	Store in a freezer at -20°C and avoid freeze-thaw cycles.

TARGET INFORMATION

Gene ID	9075
Gene Symbol	CLDN2
Uniprot ID	CLD2_HUMAN
Immunogen	Recombinant fusion protein containing a sequence corresponding to amino acids 30-230 of human CLDN2 (NP_001164566.1).
Immunogen Region	30-230
Specificity	
Immunogen Sequence	



Immunofluorescence analysis of HeLa cells using CLDN2 antibody (STJ28643). Blue: DAPI for nuclear staining.