

Anti-ATP6AP2 antibody (251-350) (STJ28614)

STJ28614

GENERAL INFORMATION

Product Type	Primary antibodies
Short Description	Rabbit polyclonal antibody anti-ATP6AP2 (251-350) is suitable for use in Western Blot and Immunofluorescence.
Applications	WB, IF
Host/Source	Rabbit
Reactivity	Human, Mouse, Rat

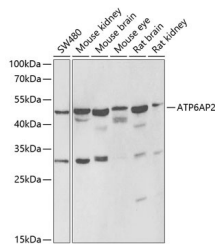
PRODUCT PROPERTIES

Clonality	Polyclonal
Clone ID	
Concentration	
Conjugation	Unconjugated
Purification	Affinity purification
Dilution Range	WB 1:500-1:2000 IF 1:50-1:100
Formulation	PBS containing 0.02% Sodium Azide, 50% Glycerol, pH7.3.
Isotype	IgG
Storage Instruction	Store in a freezer at -20°C and avoid freeze-thaw cycles.

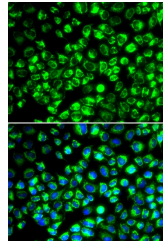
TARGET INFORMATION

Gene ID	10159
Gene Symbol	ATP6AP2
Uniprot ID	RENH_HUMAN
Immunogen	Recombinant fusion protein containing a sequence corresponding to amino acids 251-350 of human ATP6AP2 (NP_005756.2).
Immunogen Region	251-350

Specificity
Immunogen
Sequence



Western blot analysis of extracts of various cell lines, using ATP6AP2 antibody (STJ28614) at 1:1000 dilution. Secondary antibody: HRP Goat Anti-rabbit IgG (H+L) at 1:10000 dilution. Lysates/proteins: 25µg per lane. Blocking buffer: 3% nonfat dry milk in TBST. Detection: ECL Basic Kit. Exposure time: 1s.



Immunofluorescence analysis of HeLa cells using ATP6AP2 antibody (STJ28614). Blue: DAPI for nuclear staining.