

## Anti-CLEC3B antibody (22-202) (STJ28501)

STJ28501

### GENERAL INFORMATION

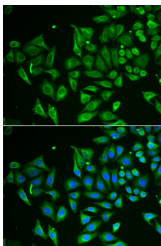
<b>Product Type</b>	Primary antibodies
<b>Short Description</b>	Rabbit polyclonal antibody anti-CLEC3B (22-202) is suitable for use in Immunofluorescence.
<b>Applications</b>	IF
<b>Host/Source</b>	Rabbit
<b>Reactivity</b>	Human

### PRODUCT PROPERTIES

<b>Clonality</b>	Polyclonal
<b>Clone ID</b>	
<b>Concentration</b>	
<b>Conjugation</b>	Unconjugated
<b>Purification</b>	Affinity purification
<b>Dilution Range</b>	IF 1:10-1:100
<b>Formulation</b>	PBS containing 0.02% Sodium Azide, 50% Glycerol, pH7.3.
<b>Isotype</b>	IgG
<b>Storage Instruction</b>	Store in a freezer at -20°C and avoid freeze-thaw cycles.

### TARGET INFORMATION

<b>Gene ID</b>	<a href="#">7123</a>
<b>Gene Symbol</b>	<a href="#">CLEC3B</a>
<b>Uniprot ID</b>	<a href="#">TETN_HUMAN</a>
<b>Immunogen</b>	Recombinant fusion protein containing a sequence corresponding to amino acids 22-202 of human CLEC3B/Tetranectin (NP_003269.2).
<b>Immunogen Region</b>	22-202
<b>Specificity</b>	
<b>Immunogen Sequence</b>	



Immunofluorescence analysis of HeLa cells using CLEC3B/Tetranectin antibody (STJ28501). Blue: DAPI for nuclear staining.

---

This product is suitable for in-vitro studies under the RESEARCH USE ONLY [RUO] licence. This product must not be used as for diagnostic or other medical purposes.  
St John's Laboratory Ltd, Knowledge Dock Business Centre, University Way, London, E16 2RD | Tel: 0208 223 3081