

Anti-PSG1 antibody (180-419) (STJ28482)

STJ28482

GENERAL INFORMATION

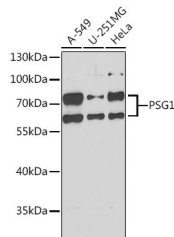
Product Type	Primary antibodies
Short Description	Rabbit polyclonal antibody anti-PSG1 (180-419) is suitable for use in Western Blot, Immunohistochemistry and Immunofluorescence.
Applications	WB, IHC, IF
Host/Source	Rabbit
Reactivity	Human

PRODUCT PROPERTIES

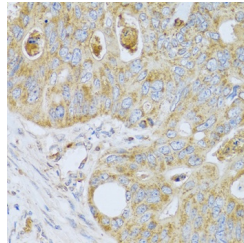
Clonality	Polyclonal
Clone ID	
Concentration	
Conjugation	Unconjugated
Purification	Affinity purification
Dilution Range	WB 1:500-1:2000 IHC 1:50-1:100 IF 1:50-1:200
Formulation	PBS containing 0.02% Sodium Azide, 50% Glycerol, pH7.3.
Isotype	IgG
Storage Instruction	Store in a freezer at -20°C and avoid freeze-thaw cycles.

TARGET INFORMATION

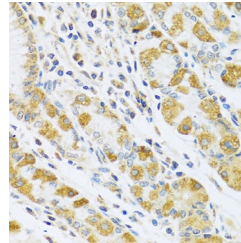
Gene ID	5669
Gene Symbol	PSG1
Uniprot ID	PSG1_HUMAN
Immunogen	Recombinant fusion protein containing a sequence corresponding to amino acids 180-419 of human PSG1 (NP_001171754.1).
Immunogen Region	180-419
Specificity	
Immunogen Sequence	



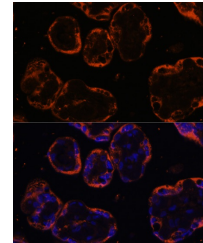
Western blot analysis of extracts of various cell lines, using PSG1 antibody (STJ28482) at 1:1000 dilution. Secondary antibody: HRP Goat Anti-rabbit IgG (H+L) at 1:10000 dilution. Lysates/proteins: 25µg per lane. Blocking buffer: 3% nonfat dry milk in TBST. Detection: ECL Basic Kit. Exposure time: 90s.



Immunohistochemistry of paraffin-embedded human colon carcinoma using PSG1 antibody (STJ28482) at dilution of 1:100 (40x lens).



Immunohistochemistry of paraffin-embedded human stomach using PSG1 antibody (STJ28482) at dilution of 1:100 (40x lens).



Immunofluorescence analysis of human placenta cells using PSG1 antibody (STJ28482) at dilution of 1:100. Blue: DAPI for nuclear staining.