

Anti-CLIC1 antibody (42-241) (STJ28446)

STJ28446

GENERAL INFORMATION

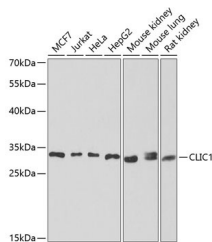
Product Type	Primary antibodies
Short Description	Rabbit polyclonal antibody anti-CLIC1 (42-241) is suitable for use in Western Blot.
Applications	WB
Host/Source	Rabbit
Reactivity	Human, Mouse, Rat

PRODUCT PROPERTIES

Clonality	Polyclonal
Clone ID	
Concentration	
Conjugation	Unconjugated
Purification	Affinity purification
Dilution Range	WB 1:500-1:2000
Formulation	PBS containing 0.02% Sodium Azide, 50% Glycerol, pH7.3.
Isotype	IgG
Storage Instruction	Store in a freezer at -20°C and avoid freeze-thaw cycles.

TARGET INFORMATION

Gene ID	1192
Gene Symbol	CLIC1
Uniprot ID	CLIC1_HUMAN
Immunogen	Recombinant fusion protein containing a sequence corresponding to amino acids 42-241 of human CLIC1 (NP_001279.2).
Immunogen Region	42-241
Specificity	
Immunogen Sequence	



Western blot analysis of extracts of various cell lines, using CLIC1 antibody (STJ28446) at 1:1000 dilution.
 _Secondary antibody: HRP Goat Anti-rabbit IgG (H+L) at 1:10000 dilution. _Lysates/proteins: 25ug per lane.
 _Blocking buffer: 3% nonfat dry milk in TBST.
 _Detection: ECL Enhanced Kit. _Exposure time: 30s.

This product is suitable for in-vitro studies under the RESEARCH USE ONLY [RUO] licence. This product must not be used as for diagnostic or other medical purposes.
 St John's Laboratory Ltd, Knowledge Dock Business Centre, University Way, London, E16 2RD | Tel: 0208 223 3081