

Anti-INHBA antibody (21-426) (STJ28400)

STJ28400

GENERAL INFORMATION

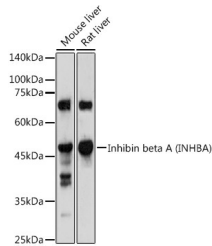
Product Type	Primary antibodies
Short Description	Rabbit polyclonal antibody anti-INHBA (21-426) is suitable for use in Western Blot and Immunofluorescence.
Applications	WB, IF
Host/Source	Rabbit
Reactivity	Human, Mouse, Rat

PRODUCT PROPERTIES

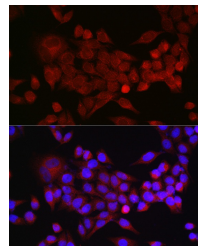
Clonality	Polyclonal
Clone ID	
Concentration	
Conjugation	Unconjugated
Purification	Affinity purification
Dilution Range	WB 1:500-1:2000 IF 1:50-1:200
Formulation	PBS containing 0.02% Sodium Azide, 50% Glycerol, pH7.3.
Isotype	IgG
Storage	Store in a freezer at -20°C and avoid freeze-thaw cycles.
Instruction	

TARGET INFORMATION

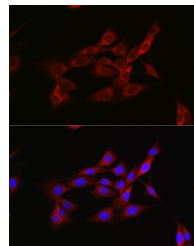
Gene ID	3624
Gene Symbol	INHBA
Uniprot ID	INHBA_HUMAN
Immunogen	Recombinant fusion protein containing a sequence corresponding to amino acids 21-426 of human Inhibin beta A (Inhibin beta A (INHBA)) (NP_002183.1).
Immunogen Region	21-426
Specificity	
Immunogen Sequence	



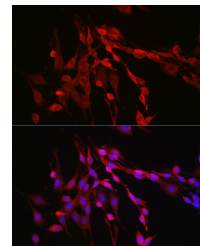
Western blot analysis of extracts of various cell lines, using Inhibin beta A (INHBA) antibody (STJ28400) at 1:1000 dilution. Secondary antibody: HRP Goat Anti-rabbit IgG (H+L) at 1:10000 dilution. Lysates/proteins: 25ug per lane. Blocking buffer: 3% nonfat dry milk in TBST. Detection: ECL Enhanced Kit. Exposure time: 180s.



Immunofluorescence analysis of HeLa cells using Inhibin beta A (INHBA) rabbit polyclonal antibody (STJ28400) at dilution of 1:50 (40x lens). Blue: DAPI for nuclear staining.



Immunofluorescence analysis of NIH/3T3 cells using Inhibin beta A (INHBA) rabbit polyclonal antibody (STJ28400) at dilution of 1:50 (40x lens). Blue: DAPI for nuclear staining.



Immunofluorescence analysis of PC-12 cells using Inhibin beta A (INHBA) rabbit polyclonal antibody (STJ28400) at dilution of 1:50 (40x lens). Blue: DAPI for nuclear staining.

This product is suitable for in-vitro studies under the RESEARCH USE ONLY [RUO] licence. This product must not be used as for diagnostic or other medical purposes.
St John's Laboratory Ltd, Knowledge Dock Business Centre, University Way, London, E16 2RD | Tel: 0208 223 3081