

Anti-SATB1 antibody (484-763) (STJ28364)

STJ28364

GENERAL INFORMATION

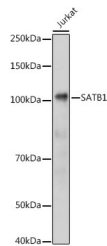
Product Type	Primary antibodies
Short Description	Rabbit polyclonal antibody anti-SATB1 (484-763) is suitable for use in Western Blot, Immunohistochemistry and Immunofluorescence.
Applications	WB, IHC, IF
Host/Source	Rabbit
Reactivity	Human, Mouse, Rat

PRODUCT PROPERTIES

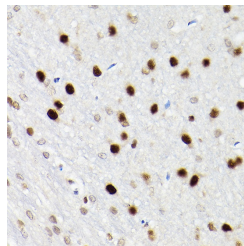
Clonality	Polyclonal
Clone ID	
Concentration	
Conjugation	Unconjugated
Purification	Affinity purification
Dilution Range	WB 1:500-1:2000 IHC 1:50-1:100 IF 1:50-1:100
Formulation	PBS containing 0.02% Sodium Azide, 50% Glycerol, pH7.3.
Isotype	IgG
Storage Instruction	Store in a freezer at -20°C and avoid freeze-thaw cycles.

TARGET INFORMATION

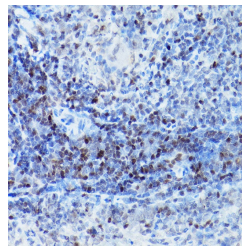
Gene ID	6304
Gene Symbol	SATB1
Uniprot ID	SATB1_HUMAN
Immunogen	Recombinant fusion protein containing a sequence corresponding to amino acids 484-763 of human SATB1 (NP_001124482.1).
Immunogen Region	484-763
Specificity	
Immunogen Sequence	



Western blot analysis of extracts of Jurkat cells, using SATB1 antibody (STJ28364) at 1:1000 dilution. Secondary antibody: HRP Goat Anti-rabbit IgG (H+L) at 1:10000 dilution. Lysates/proteins: 25µg per lane. Blocking buffer: 3% nonfat dry milk in TBST. Detection: ECL Basic Kit. Exposure time: 1s.



Immunohistochemistry of paraffin-embedded rat brain using SATB1 rabbit polyclonal antibody (STJ28364) at dilution of 1:200 (40x lens).



Immunohistochemistry of paraffin-embedded rat spleen using SATB1 rabbit polyclonal antibody (STJ28364) at dilution of 1:200 (40x lens).