

Anti-ATF1 antibody (1-210) (STJ28355)

STJ28355

GENERAL INFORMATION

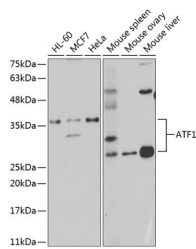
Product Type	Primary antibodies
Short Description	Rabbit polyclonal antibody anti-ATF1 (1-210) is suitable for use in Western Blot and Immunoprecipitation.
Applications	WB, IP
Host/Source	Rabbit
Reactivity	Human, Mouse

PRODUCT PROPERTIES

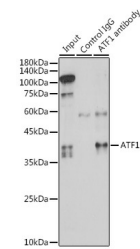
Clonality	Polyclonal
Clone ID	
Concentration	
Conjugation	Unconjugated
Purification	Affinity purification
Dilution Range	WB 1:500-1:2000 IP 1:50-1:200
Formulation	PBS containing 0.02% Sodium Azide, 50% Glycerol, pH7.3.
Isotype	IgG
Storage Instruction	Store in a freezer at -20°C and avoid freeze-thaw cycles.

TARGET INFORMATION

Gene ID	466
Gene Symbol	ATF1
Uniprot ID	ATF1_HUMAN
Immunogen	Recombinant fusion protein containing a sequence corresponding to amino acids 1-210 of human ATF1 (NP_005162.1).
Immunogen Region	1-210
Specificity	
Immunogen Sequence	



Western blot analysis of extracts of various cell lines, using ATF1 antibody (STJ28355) at 1:1000 dilution. Secondary antibody: HRP-Coat Anti-rabbit IgG (H+L) at 1:10000 dilution. Lysates/proteins: 25ug per lane. Blocking buffer: 3% nonfat dry milk in TBST.



Immunoprecipitation analysis of 300ug extracts of HeLa cells using 3ug ATF1 antibody (STJ28355). Western blot was performed from the immunoprecipitate using ATF1 antibody (STJ28355) at a dilution of 1:1000.

This product is suitable for in-vitro studies under the RESEARCH USE ONLY [RUO] licence. This product must not be used as for diagnostic or other medical purposes.
St John's Laboratory Ltd, Knowledge Dock Business Centre, University Way, London, E16 2RD | Tel: 0208 223 3081