

Anti-COL1A2 antibody (500-600) (STJ28351)

STJ28351

GENERAL INFORMATION

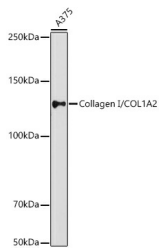
| | |
|--------------------------|--|
| Product Type | Primary antibodies |
| Short Description | Rabbit polyclonal antibody anti-COL1A2 (500-600) is suitable for use in Western Blot, Immunohistochemistry and Immunofluorescence. |
| Applications | WB, IHC, IF |
| Host/Source | Rabbit |
| Reactivity | Human, Mouse, Rat |

PRODUCT PROPERTIES

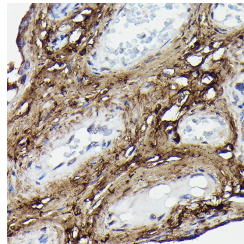
| | |
|----------------------------|---|
| Clonality | Polyclonal |
| Clone ID | |
| Concentration | |
| Conjugation | Unconjugated |
| Purification | Affinity purification |
| Dilution Range | WB 1:500-1:2000 IHC 1:50-1:200 IF 1:25-1:200 |
| Formulation | PBS containing 0.02% Sodium Azide, 50% Glycerol, pH7.3. |
| Isotype | IgG |
| Storage Instruction | Store in a freezer at -20°C and avoid freeze-thaw cycles. |

TARGET INFORMATION

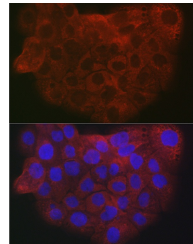
| | |
|---------------------------|---|
| Gene ID | 1278 |
| Gene Symbol | COL1A2 |
| Uniprot ID | CO1A2_HUMAN |
| Immunogen | A synthetic peptide corresponding to a sequence within amino acids 500-600 of human COL1A2 (NP_000080.2). |
| Immunogen Region | 500-600 |
| Specificity | |
| Immunogen Sequence | |



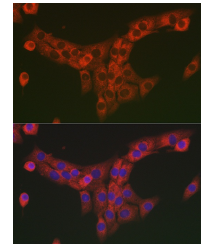
Western blot analysis of extracts of A375 cells, using Collagen I/COL1A2 antibody (STJ28351) at 1:1000 dilution. Secondary antibody: HRP Goat Anti-rabbit IgG (H+L) at 1:10000 dilution. Lysates/proteins: 25ug per lane. Blocking buffer: 3% nonfat dry milk in TBST. Detection: ECL Enhanced Kit. Exposure time: 180s.



Immunohistochemistry of paraffin-embedded human placenta using Collagen I/COL1A2 rabbit polyclonal antibody (STJ28351) at dilution of 1:100 (40x lens). Perform high pressure antigen retrieval with 10 mM citrate buffer pH 6.0 before commencing with immunohistochemistry staining protocol.



Immunofluorescence analysis of A-431 cells using Collagen I/COL1A2 antibody (STJ28351) at dilution of 1:25. Blue: DAPI for nuclear staining.



Immunofluorescence analysis of NIH/3T3 cells using Collagen I/COL1A2 antibody (STJ28351) at dilution of 1:25. Blue: DAPI for nuclear staining.