

Anti-INSL3 antibody (1-131) (STJ28295)

STJ28295

GENERAL INFORMATION

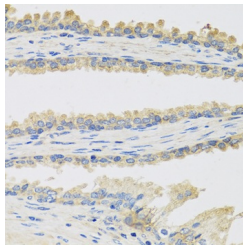
Product Type	Primary antibodies
Short Description	Rabbit polyclonal antibody anti-INSL3 (1-131) is suitable for use in Immunohistochemistry and Immunofluorescence.
Applications	IHC, IF
Host/Source	Rabbit
Reactivity	Human, Mouse, Rat

PRODUCT PROPERTIES

Clonality	Polyclonal
Clone ID	
Concentration	
Conjugation	Unconjugated
Purification	Affinity purification
Dilution Range	IHC 1:50-1:100 IF 1:50-1:100
Formulation	PBS containing 0.02% Sodium Azide, 50% Glycerol, pH7.3.
Isotype	IgG
Storage Instruction	Store in a freezer at -20°C and avoid freeze-thaw cycles.

TARGET INFORMATION

Gene ID	3640
Gene Symbol	INSL3
Uniprot ID	INSL3_HUMAN
Immunogen	Recombinant fusion protein containing a sequence corresponding to amino acids 1-131 of human INSL3 (NP_005534.2).
Immunogen Region	1-131
Specificity	
Immunogen Sequence	



Immunohistochemistry of paraffin-embedded human prostate using INSL3 antibody (STJ28295) at dilution of 1:100 (40x lens).

This product is suitable for in-vitro studies under the RESEARCH USE ONLY [RUO] licence. This product must not be used as for diagnostic or other medical purposes.
St John's Laboratory Ltd, Knowledge Dock Business Centre, University Way, London, E16 2RD | Tel: 0208 223 3081