

Anti-RUVBL1 antibody (1-240) (STJ28290)

STJ28290

GENERAL INFORMATION

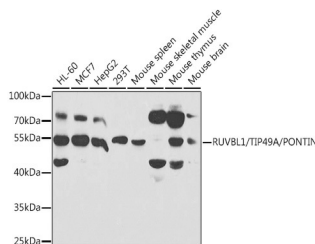
Product Type	Primary antibodies
Short Description	Rabbit polyclonal antibody anti-RUVBL1 (1-240) is suitable for use in Western Blot, Immunohistochemistry and Immunofluorescence.
Applications	WB, IHC, IF
Host/Source	Rabbit
Reactivity	Human, Mouse

PRODUCT PROPERTIES

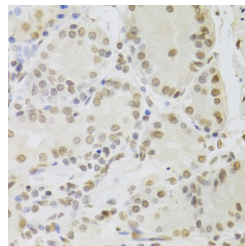
Clonality	Polyclonal
Clone ID	
Concentration	
Conjugation	Unconjugated
Purification	Affinity purification
Dilution Range	WB 1:500-1:2000 IHC 1:50-1:200 IF 1:20-1:50
Formulation	PBS containing 0.02% Sodium Azide, 50% Glycerol, pH7.3.
Isotype	IgG
Storage Instruction	Store in a freezer at -20°C and avoid freeze-thaw cycles.

TARGET INFORMATION

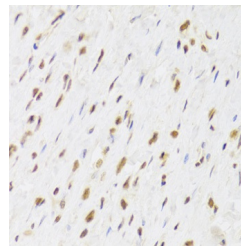
Gene ID	8607
Gene Symbol	RUVBL1
Uniprot ID	RUVB1_HUMAN
Immunogen	Recombinant fusion protein containing a sequence corresponding to amino acids 1-240 of human RUVBL1/TIP49A/PONTIN (NP_003698.1).
Immunogen Region	1-240
Specificity	
Immunogen Sequence	



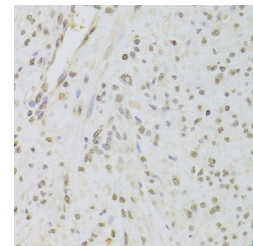
Western blot analysis of extracts of various cell lines, using RUVBL1/TIP49A/PONTIN antibody (STJ28290) at 1:1000 dilution. Secondary antibody: HRP Goat Anti-rabbit IgG (H+L) at 1:10000 dilution. Lysates/proteins: 25µg per lane. Blocking buffer: 3% nonfat dry milk in TBST. Detection: ECL Enhanced Kit. Exposure time: 15s.



Immunohistochemistry of paraffin-embedded human stomach using RUVBL1/TIP49A/PONTIN Antibody (STJ28290) at dilution of 1:100 (40x lens).



Immunohistochemistry of paraffin-embedded human gastric cancer using RUVBL1/TIP49A/PONTIN Antibody (STJ28290) at dilution of 1:100 (40x lens).



Immunohistochemistry of paraffin-embedded human leiomyoma of uterus using RUVBL1/TIP49A/PONTIN Antibody (STJ28290) at dilution of 1:100 (40x lens).

This product is suitable for in-vitro studies under the RESEARCH USE ONLY [RUO] licence. This product must not be used as for diagnostic or other medical purposes.
St John's Laboratory Ltd, Knowledge Dock Business Centre, University Way, London, E16 2RD | Tel: 0208 223 3081