

Anti-CS antibody (167-466) (STJ28281)

STJ28281

GENERAL INFORMATION

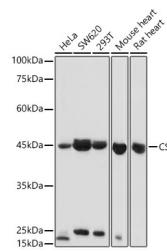
Product Type	Primary antibodies
Short Description	Rabbit polyclonal antibody anti-CS (167-466) is suitable for use in Western Blot and Immunofluorescence.
Applications	WB, IF
Host/Source	Rabbit
Reactivity	Human, Mouse, Rat

PRODUCT PROPERTIES

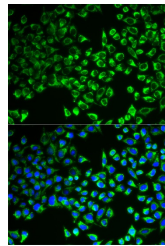
Clonality	Polyclonal
Clone ID	
Concentration	
Conjugation	Unconjugated
Purification	Affinity purification
Dilution Range	WB 1:500-1:2000 IF 1:50-1:200
Formulation	PBS containing 0.02% Sodium Azide, 50% Glycerol, pH7.3.
Isotype	IgG
Storage Instruction	Store in a freezer at -20°C and avoid freeze-thaw cycles.

TARGET INFORMATION

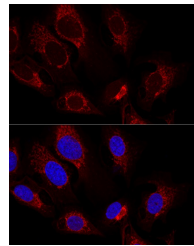
Gene ID	1431
Gene Symbol	CS
Uniprot ID	CISY_HUMAN
Immunogen	Recombinant fusion protein containing a sequence corresponding to amino acids 167-466 of human CS (NP_004068.2).
Immunogen Region	167-466
Specificity	
Immunogen Sequence	



Western blot analysis of extracts of various cell lines, using CS antibody (STJ28281) at 1:1000 dilution. Secondary antibody: HRP-Coat Anti-rabbit IgG (H+L) at 1:10000 dilution. Lysates/proteins: 25ug per lane. Blocking buffer: 3% nonfat dry milk in TBST. Detection: ECL Basic Kit. Exposure time: 10s.



Immunofluorescence analysis of MCF-7 cells using CS antibody (STJ28281). Blue: DAPI for nuclear staining.



Confocal immunofluorescence analysis of U2OS cells using CS Polyclonal Antibody (STJ28281) at dilution of 1:100. Blue: DAPI for nuclear staining.

This product is suitable for in-vitro studies under the RESEARCH USE ONLY [RUO] licence. This product must not be used as for diagnostic or other medical purposes.
St John's Laboratory Ltd, Knowledge Dock Business Centre, University Way, London, E16 2RD | Tel: 0208 223 3081