

Anti-PRDX5 antibody (53-214) (STJ28251)

STJ28251

GENERAL INFORMATION

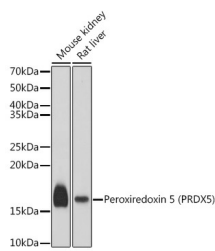
Product Type	Primary antibodies
Short Description	Rabbit polyclonal antibody anti-PRDX5 (53-214) is suitable for use in Western Blot, Immunohistochemistry and Immunofluorescence.
Applications	WB, IHC, IF
Host/Source	Rabbit
Reactivity	Human, Mouse, Rat

PRODUCT PROPERTIES

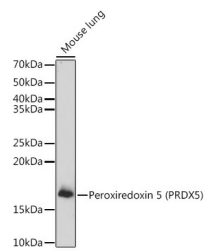
Clonality	Polyclonal
Clone ID	
Concentration	
Conjugation	Unconjugated
Purification	Affinity purification
Dilution Range	WB 1:500-1:2000 IHC 1:50-1:200 IF 1:50-1:200
Formulation	PBS containing 0.02% Sodium Azide, 50% Glycerol, pH7.3.
Isotype	IgG
Storage	Store in a freezer at -20°C and avoid freeze-thaw cycles.
Instruction	

TARGET INFORMATION

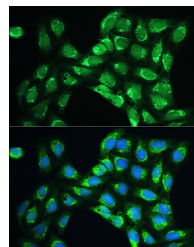
Gene ID	25824
Gene Symbol	PRDX5
Uniprot ID	PRDX5_HUMAN
Immunogen	Recombinant fusion protein containing a sequence corresponding to amino acids 53-214 of human Peroxiredoxin 5 (Peroxiredoxin 5 (PRDX5)) (NP_036226.1).
Immunogen Region	53-214
Specificity	
Immunogen Sequence	



Western blot analysis of extracts of various cell lines, using Peroxiredoxin 5 (Peroxiredoxin 5 (PRDX5)) antibody (STJ28251) at 1:1000 dilution. Secondary antibody: HRP Goat Anti-rabbit IgG (H+L) at 1:10000 dilution. Lysates/proteins: 25ug per lane. Blocking buffer: 3% nonfat dry milk in TBST. Detection: ECL Basic Kit. Exposure time: 5s.



Western blot analysis of extracts of mouse lung, using Peroxiredoxin 5 (Peroxiredoxin 5 (PRDX5)) antibody (STJ28251) at 1:1000 dilution. Secondary antibody: HRP Goat Anti-rabbit IgG (H+L) at 1:10000 dilution. Lysates/proteins: 25ug per lane. Blocking buffer: 3% nonfat dry milk in TBST. Detection: ECL Basic Kit. Exposure time: 180s.



Immunofluorescence analysis of U2OS cells using Peroxiredoxin 5 (Peroxiredoxin 5 (PRDX5)) rabbit polyclonal antibody (STJ28251) at dilution of 1:100. Blue: DAPI for nuclear staining.

This product is suitable for in-vitro studies under the RESEARCH USE ONLY [RUO] licence. This product must not be used as for diagnostic or other medical purposes.

St John's Laboratory Ltd, Knowledge Dock Business Centre, University Way, London, E16 2RD | Tel: 0208 223 3081