

Anti-DPEP1 antibody (17-385) (STJ28211)

STJ28211

GENERAL INFORMATION

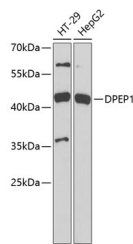
Product Type	Primary antibodies
Short Description	Rabbit polyclonal antibody anti-DPEP1 (17-385) is suitable for use in Western Blot.
Applications	WB
Host/Source	Rabbit
Reactivity	Human, Mouse

PRODUCT PROPERTIES

Clonality	Polyclonal
Clone ID	
Concentration	
Conjugation	Unconjugated
Purification	Affinity purification
Dilution Range	WB 1:500-1:2000
Formulation	PBS containing 0.02% Sodium Azide, 50% Glycerol, pH7.3.
Isotype	IgG
Storage Instruction	Store in a freezer at -20°C and avoid freeze-thaw cycles.

TARGET INFORMATION

Gene ID	1800
Gene Symbol	DPEP1
Uniprot ID	DPEP1_HUMAN
Immunogen	Recombinant fusion protein containing a sequence corresponding to amino acids 17-385 of human DPEP1 (NP_001121613.1).
Immunogen Region	17-385
Specificity	
Immunogen Sequence	



Western blot analysis of extracts of various cell lines, using DPEP1 antibody (STJ28211) at 1:1000 dilution. Secondary antibody: HRP Goat Anti-rabbit IgG (H+L) at 1:10000 dilution. Lysates/proteins: 25µg per lane. Blocking buffer: 3% nonfat dry milk in TBST.