

Anti-AKT1S1 antibody (152-276) (STJ27994)

STJ27994

GENERAL INFORMATION

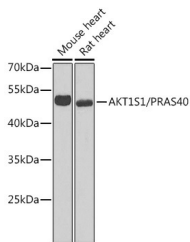
Product Type	Primary antibodies
Short Description	Rabbit polyclonal antibody anti-AKT1S1 (152-276) is suitable for use in Western Blot, Immunohistochemistry and Immunofluorescence.
Applications	WB, IHC, IF
Host/Source	Rabbit
Reactivity	Human, Mouse, Rat

PRODUCT PROPERTIES

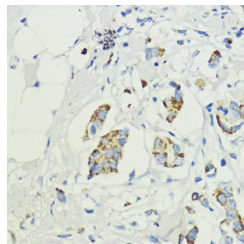
Clonality	Polyclonal
Clone ID	
Concentration	
Conjugation	Unconjugated
Purification	Affinity purification
Dilution Range	WB 1:500-1:2000
	IHC 1:50-1:100
	IF 1:50-1:100
Formulation	PBS containing 0.02% Sodium Azide, 50% Glycerol, pH7.3.
Isotype	IgG
Storage Instruction	Store in a freezer at -20°C and avoid freeze-thaw cycles.

TARGET INFORMATION

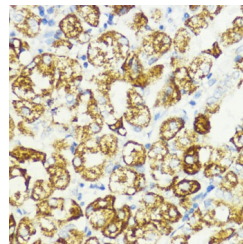
Gene ID	84335
Gene Symbol	AKT1S1
Uniprot ID	AKTS1_HUMAN
Immunogen	Recombinant fusion protein containing a sequence corresponding to amino acids 152-276 of human AKT1S1/PRAS40 (NP_115751.3).
Immunogen Region	152-276
Specificity	
Immunogen Sequence	



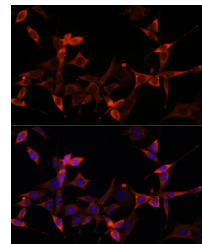
Western blot analysis of extracts of various cell lines, using AKT1S1/PRAS40 antibody (STJ27994) at 1:1000 dilution. Secondary antibody: HRP Goat Anti-rabbit IgG (H+L) at 1:10000 dilution. Lysates/proteins: 25ug per lane. Blocking buffer: 3% nonfat dry milk in TBST. Detection: ECL Enhanced Kit. Exposure time: 90s.



Immunohistochemistry of paraffin-embedded human mammary cancer using AKT1S1/PRAS40 antibody (STJ27994) at dilution of 1:200 (40x lens).



Immunohistochemistry of paraffin-embedded human stomach using AKT1S1/PRAS40 antibody (STJ27994) at dilution of 1:200 (40x lens).



Immunofluorescence analysis of NIH-3T3 cells using AKT1S1/PRAS40 Polyclonal Antibody (STJ27994) at dilution of 1:100 (40x lens). Blue: DAPI for nuclear staining.