

Anti-SERPINE1 antibody (24-402) (STJ27967)

STJ27967

GENERAL INFORMATION

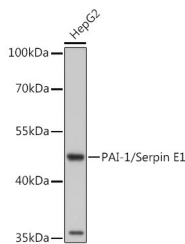
Product Type	Primary antibodies
Short Description	Rabbit polyclonal antibody anti-SERPINE1 (24-402) is suitable for use in Western Blot and Immunofluorescence.
Applications	WB, IF
Host/Source	Rabbit
Reactivity	Human, Mouse, Rat

PRODUCT PROPERTIES

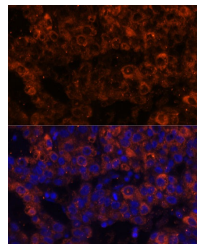
Clonality	Polyclonal
Clone ID	
Concentration	
Conjugation	Unconjugated
Purification	Affinity purification
Dilution Range	WB 1:500-1:2000 IF 1:50-1:200
Formulation	PBS containing 0.02% Sodium Azide, 50% Glycerol, pH7.3.
Isotype	IgG
Storage Instruction	Store in a freezer at -20°C and avoid freeze-thaw cycles.

TARGET INFORMATION

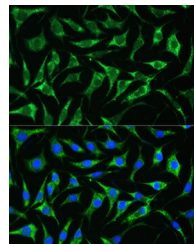
Gene ID	5054
Gene Symbol	SERPINE1
Uniprot ID	PAI1_HUMAN
Immunogen	Recombinant fusion protein containing a sequence corresponding to amino acids 24-402 of human PAI-1/Serpin E1 (NP_000593.1).
Immunogen Region	24-402
Specificity	
Immunogen Sequence	



Western blot analysis of extracts of HepG2 cells, using PAI-1/Serpin E1 antibody (STJ27967) at 1:1000 dilution. Secondary antibody: HRP Goat Anti-rabbit IgG (H+L) at 1:10000 dilution. Lysates/proteins: 25ug per lane. Blocking buffer: 3% nonfat dry milk in TBST. Detection: ECL Basic Kit. Exposure time: 60s.



Immunofluorescence analysis of human liver cancer using PAI-1/Serpin E1 Polyclonal Antibody (STJ27967) at dilution of 1:100 (40x lens). Blue: DAPI for nuclear staining.



Immunofluorescence analysis of L929 cells using PAI-1/Serpin E1 antibody (STJ27967) at dilution of 1:100. Blue: DAPI for nuclear staining.