

Anti-CXCL11 antibody (22-94) (STJ27957)

STJ27957

GENERAL INFORMATION

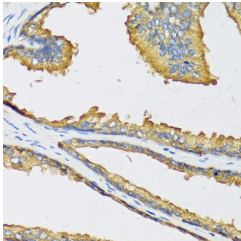
Product Type	Primary antibodies
Short Description	Rabbit polyclonal antibody anti-CXCL11 (22-94) is suitable for use in Immunohistochemistry.
Applications	IHC
Host/Source	Rabbit
Reactivity	Human

PRODUCT PROPERTIES

Clonality	Polyclonal
Clone ID	
Concentration	
Conjugation	Unconjugated
Purification	Affinity purification
Dilution Range	IHC 1:100-1:200
Formulation	PBS containing 0.02% Sodium Azide, 50% Glycerol, pH7.3.
Isotype	IgG
Storage Instruction	Store in a freezer at -20°C and avoid freeze-thaw cycles.

TARGET INFORMATION

Gene ID	6373
Gene Symbol	CXCL11
Uniprot ID	CXL11_HUMAN
Immunogen	Recombinant fusion protein containing a sequence corresponding to amino acids 22-94 of human CXCL11 (NP_005400.1).
Immunogen Region	22-94
Specificity	
Immunogen Sequence	



Immunohistochemistry of paraffin-embedded human prostate using CXCL11 antibody (STJ27957) at dilution of 1:100 (40x lens).