

Anti-ERCC6L antibody (300-400) (STJ27892)

STJ27892

GENERAL INFORMATION

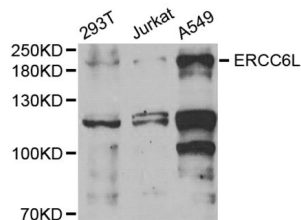
Product Type	Primary antibodies
Short Description	Rabbit polyclonal antibody anti-ERCC6L (300-400) is suitable for use in Western Blot.
Applications	WB
Host/Source	Rabbit
Reactivity	Human

PRODUCT PROPERTIES

Clonality	Polyclonal
Clone ID	
Concentration	
Conjugation	Unconjugated
Purification	Affinity purification
Dilution Range	WB 1:500-1:2000
Formulation	PBS containing 0.02% Sodium Azide, 50% Glycerol, pH7.3.
Isotype	IgG
Storage Instruction	Store in a freezer at -20°C and avoid freeze-thaw cycles.

TARGET INFORMATION

Gene ID	54821
Gene Symbol	ERCC6L
Uniprot ID	ERC6L_HUMAN
Immunogen	A synthetic peptide corresponding to a sequence within amino acids 300-400 of human ERCC6L (NP_060139.2).
Immunogen Region	300-400
Specificity	
Immunogen Sequence	



Western blot analysis of extracts of various cell lines, using ERCC6L antibody (STJ27892) at 1:1000 dilution. Secondary antibody: HRP Goat Anti-rabbit IgG (H+L) at 1:10000 dilution. Lysates/proteins: 25µg per lane. Blocking buffer: 3% nonfat dry milk in TBST. Detection: ECL Basic Kit. Exposure time: 90s.