

Anti-C11orf30 antibody (1153-1322) (STJ27891)

STJ27891

GENERAL INFORMATION

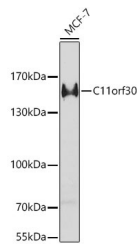
Product Type	Primary antibodies
Short Description	Rabbit polyclonal antibody anti-C11orf30 (1153-1322) is suitable for use in Western Blot and Immunofluorescence.
Applications	WB, IF
Host/Source	Rabbit
Reactivity	Human, Mouse

PRODUCT PROPERTIES

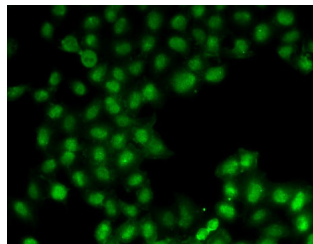
Clonality	Polyclonal
Clone ID	
Concentration	
Conjugation	Unconjugated
Purification	Affinity purification
Dilution Range	WB 1:500-1:2000 IF 1:50-1:100
Formulation	PBS containing 0.02% Sodium Azide, 50% Glycerol, pH7.3.
Isotype	IgG
Storage Instruction	Store in a freezer at -20°C and avoid freeze-thaw cycles.

TARGET INFORMATION

Gene ID	56946
Gene Symbol	EMSY
Uniprot ID	EMSY_HUMAN
Immunogen	Recombinant fusion protein containing a sequence corresponding to amino acids 1153-1322 of human C11orf30 (NP_064578.2).
Immunogen Region	1153-1322
Specificity	
Immunogen Sequence	



Western blot analysis of extracts of MCF-7 cells, using C11orf30 antibody (STJ27891) at 1:1000 dilution. Secondary antibody: HRP Goat Anti-rabbit IgG (H+L) at 1:10000 dilution. Lysates/proteins: 25µg per lane. Blocking buffer: 3% nonfat dry milk in TBST. Detection: ECL Enhanced Kit. Exposure time: 60s.



Immunofluorescence analysis of U2OS cells using C11orf30 antibody (STJ27891).

This product is suitable for in-vitro studies under the RESEARCH USE ONLY [RUO] licence. This product must not be used as for diagnostic or other medical purposes.
St John's Laboratory Ltd, Knowledge Dock Business Centre, University Way, London, E16 2RD | Tel: 0208 223 3081