

Anti-FGF23 antibody (25-251) (STJ27877)

STJ27877

GENERAL INFORMATION

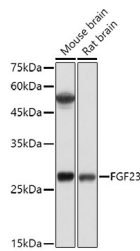
Product Type	Primary antibodies
Short Description	Rabbit polyclonal antibody anti-FGF23 (25-251) is suitable for use in Western Blot and Immunofluorescence.
Applications	WB, IF
Host/Source	Rabbit
Reactivity	Human, Mouse, Rat

PRODUCT PROPERTIES

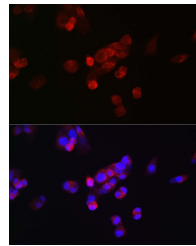
Clonality	Polyclonal
Clone ID	
Concentration	
Conjugation	Unconjugated
Purification	Affinity purification
Dilution Range	WB 1:500-1:2000 IF 1:50-1:200
Formulation	PBS containing 0.02% Sodium Azide, 50% Glycerol, pH7.3.
Isotype	IgG
Storage Instruction	Store in a freezer at -20°C and avoid freeze-thaw cycles.

TARGET INFORMATION

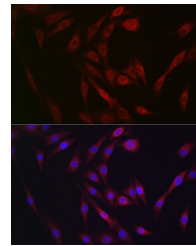
Gene ID	8074
Gene Symbol	FGF23
Uniprot ID	FGF23_HUMAN
Immunogen	Recombinant fusion protein containing a sequence corresponding to amino acids 25-251 of human FGF23 (NP_065689.1).
Immunogen Region	25-251
Specificity	
Immunogen Sequence	



Western blot analysis of extracts of various cell lines, using FGF23 antibody (STJ27877) at 1:500 dilution. Secondary antibody: HRP-Coat Anti-rabbit IgG (H+L) at 1:10000 dilution. Lysates/proteins: 25µg per lane. Blocking buffer: 3% nonfat dry milk in TBST. Detection: ECL Basic Kit. Exposure time: 10s.



Immunofluorescence analysis of HepG2 cells using FGF23 antibody (STJ27877) at dilution of 1:25. Blue: DAPI for nuclear staining.



Immunofluorescence analysis of NIH/3T3 cells using FGF23 antibody (STJ27877) at dilution of 1:25. Blue: DAPI for nuclear staining.

This product is suitable for in-vitro studies under the RESEARCH USE ONLY [RUO] licence. This product must not be used as for diagnostic or other medical purposes.
St John's Laboratory Ltd, Knowledge Dock Business Centre, University Way, London, E16 2RD | Tel: 0208 223 3081