

Anti-GSTP1 antibody (1-210) (STJ27658)

STJ27658

GENERAL INFORMATION

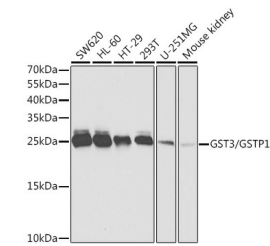
Product Type	Primary antibodies
Short Description	Rabbit polyclonal antibody anti-GSTP1 (1-210) is suitable for use in Western Blot, Immunohistochemistry and Immunofluorescence.
Applications	WB, IHC, IF
Host/Source	Rabbit
Reactivity	Human, Mouse

PRODUCT PROPERTIES

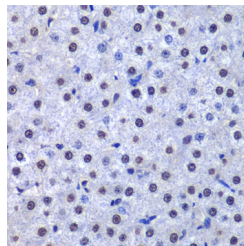
Clonality	Polyclonal
Clone ID	
Concentration	
Conjugation	Unconjugated
Purification	Affinity purification
Dilution Range	WB 1:500-1:2000 IHC 1:50-1:200 IF 1:50-1:200
Formulation	PBS containing 0.02% Sodium Azide, 50% Glycerol, pH7.3.
Isotype	IgG
Storage Instruction	Store in a freezer at -20°C and avoid freeze-thaw cycles.

TARGET INFORMATION

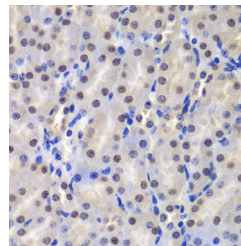
Gene ID	2950
Gene Symbol	GSTP1
Uniprot ID	GSTP1_HUMAN
Immunogen	Recombinant fusion protein containing a sequence corresponding to amino acids 1-210 of human GST3/GST3/GSTP1 (NP_000843.1).
Immunogen Region	1-210
Specificity	
Immunogen Sequence	



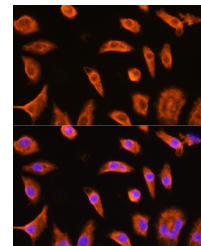
Western blot analysis of extracts of various cell lines, using GST3/GST3/GSTP1 antibody (STJ27658) at 1:1000 dilution. Secondary antibody: HRP Goat Anti-rabbit IgG (H+L) at 1:10000 dilution. Lysates/proteins: 25µg per lane. Blocking buffer: 3% nonfat dry milk in TBST. Detection: ECL Basic Kit. Exposure time: 5s.



Immunohistochemistry of paraffin-embedded human liver cancer using GST3/GST3/GSTP1 antibody (STJ27658) at dilution of 1:200 (40x lens).



Immunohistochemistry of paraffin-embedded mouse kidney using GST3/GST3/GSTP1 antibody (STJ27658) at dilution of 1:200 (40x lens).



Immunofluorescence analysis of L929 cells using GST3/GST3/GSTP1 rabbit polyclonal antibody (STJ27658) at dilution of 1:100 (40x lens). Blue: DAPI for nuclear staining.

This product is suitable for in-vitro studies under the RESEARCH USE ONLY [RUO] licence. This product must not be used as for diagnostic or other medical purposes.
St John's Laboratory Ltd, Knowledge Dock Business Centre, University Way, London, E16 2RD | Tel: 0208 223 3081