

Anti-FKBP4 antibody (220-459) (STJ27610)

STJ27610

GENERAL INFORMATION

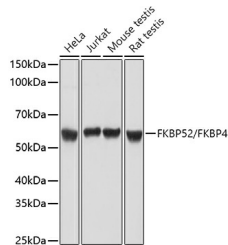
Product Type	Primary antibodies
Short Description	Rabbit polyclonal antibody anti-FKBP4 (220-459) is suitable for use in Western Blot, Immunohistochemistry, Immunofluorescence and Immunoprecipitation.
Applications	WB, IHC, IF, IP
Host/Source	Rabbit
Reactivity	Human, Mouse, Rat

PRODUCT PROPERTIES

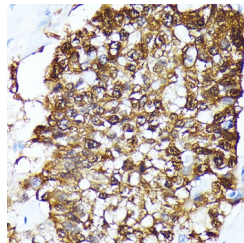
Clonality	Polyclonal
Clone ID	
Concentration	
Conjugation	Unconjugated
Purification	Affinity purification
Dilution Range	WB 1:500-1:2000 IHC 1:50-1:200 IF 1:50-1:100 IP 1:50-1:200
Formulation	PBS containing 0.02% Sodium Azide, 50% Glycerol, pH7.3.
Isotype	IgG
Storage	Store in a freezer at -20°C and avoid freeze-thaw cycles.
Instruction	

TARGET INFORMATION

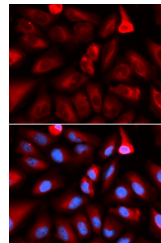
Gene ID	2288
Gene Symbol	FKBP4
Uniprot ID	FKBP4_HUMAN
Immunogen	Recombinant fusion protein containing a sequence corresponding to amino acids 220-459 of human FKBP52/FKBP52/FKBP4 (NP_002005.1).
Immunogen Region	220-459
Specificity	
Immunogen Sequence	



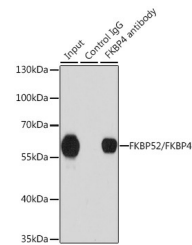
Western blot analysis of extracts of various cell lines, using FKBP52/FKBP4 antibody (STJ27610) at 1:1000 dilution. Secondary antibody: HRP Goat Anti-rabbit IgG (H+L) at 1:10000 dilution. Lysates/proteins: 25ug per lane. Blocking buffer: 3% nonfat dry milk in TBST. Detection: ECL Basic Kit. Exposure time: 5s.



Immunohistochemistry of paraffin-embedded human lung cancer using FKBP52/FKBP52/FKBP4 rabbit polyclonal antibody (STJ27610) at dilution of 1:100 (40x lens). Perform microwave antigen retrieval with 10 mM Tris/EDTA buffer pH 9.0 before commencing with immunohistochemistry staining protocol.



Immunofluorescence analysis of U2OS cells using FKBP52/FKBP52/FKBP4 antibody (STJ27610). Blue: DAPI for nuclear staining.



Immunoprecipitation analysis of 200ug extracts of 293T cells using 1ug FKBP52/FKBP52/FKBP4 antibody (STJ27610). Western blot was performed from the immunoprecipitate using FKBP52/FKBP52/FKBP4 antibody (STJ27610) at a dilution of 1:1000.

This product is suitable for in-vitro studies under the RESEARCH USE ONLY [RUO] licence. This product must not be used as for diagnostic or other medical purposes.
St John's Laboratory Ltd, Knowledge Dock Business Centre, University Way, London, E16 2RD | Tel: 0208 223 3081