

## Anti-CCNA1 antibody (1-230) (STJ27598)

STJ27598

### GENERAL INFORMATION

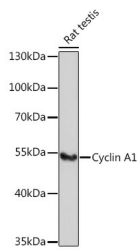
<b>Product Type</b>	Primary antibodies
<b>Short Description</b>	Rabbit polyclonal antibody anti-CCNA1 (1-230) is suitable for use in Western Blot.
<b>Applications</b>	WB
<b>Host/Source</b>	Rabbit
<b>Reactivity</b>	Human, Rat

### PRODUCT PROPERTIES

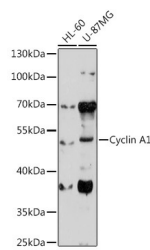
<b>Clonality</b>	Polyclonal
<b>Clone ID</b>	
<b>Concentration</b>	
<b>Conjugation</b>	Unconjugated
<b>Purification</b>	Affinity purification
<b>Dilution Range</b>	WB 1:500-1:2000
<b>Formulation</b>	PBS containing 0.02% Sodium Azide, 50% Glycerol, pH7.3.
<b>Isotype</b>	IgG
<b>Storage Instruction</b>	Store in a freezer at -20°C and avoid freeze-thaw cycles.

### TARGET INFORMATION

<b>Gene ID</b>	8900
<b>Gene Symbol</b>	CCNA1
<b>Uniprot ID</b>	CCNA1_HUMAN
<b>Immunogen</b>	Recombinant fusion protein containing a sequence corresponding to amino acids 1-230 of human CCNA1 (NP_001104515.1).
<b>Immunogen Region</b>	1-230
<b>Specificity</b>	
<b>Immunogen Sequence</b>	



Western blot analysis of extracts of Rat testis, using Cyclin A1 antibody (STJ27598) at 1:1000 dilution. Secondary antibody: HRP Goat Anti-rabbit IgG (H+L) at 1:10000 dilution. Lysates/proteins: 25ug per lane. Blocking buffer: 3% nonfat dry milk in TBST. Detection: ECL Basic Kit. Exposure time: 3min.



Western blot analysis of extracts of various cell lines, using Cyclin A1 antibody (STJ27598) at 1:1000 dilution. Secondary antibody: HRP Goat Anti-rabbit IgG (H+L) at 1:10000 dilution. Lysates/proteins: 25ug per lane. Blocking buffer: 3% nonfat dry milk in TBST. Detection: ECL Basic Kit. Exposure time: 3min.

This product is suitable for in-vitro studies under the RESEARCH USE ONLY [RUO] licence. This product must not be used as for diagnostic or other medical purposes.  
 St John's Laboratory Ltd, Knowledge Dock Business Centre, University Way, London, E16 2RD | Tel: 0208 223 3081