

Anti-RAG2 antibody (258-527) (STJ27593)

STJ27593

GENERAL INFORMATION

Product Type	Primary antibodies
Short Description	Rabbit polyclonal antibody anti-RAG2 (258-527) is suitable for use in Western Blot and Immunofluorescence.
Applications	WB, IF
Host/Source	Rabbit
Reactivity	Human, Mouse

PRODUCT PROPERTIES

Clonality	Polyclonal
Clone ID	
Concentration	
Conjugation	Unconjugated
Purification	Affinity purification
Dilution Range	WB 1:500-1:2000 IF 1:50-1:200
Formulation	PBS containing 0.02% Sodium Azide, 50% Glycerol, pH7.3.
Isotype	IgG
Storage Instruction	Store in a freezer at -20°C and avoid freeze-thaw cycles.

TARGET INFORMATION

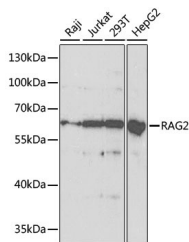
Gene ID	5897
Gene Symbol	RAG2
Uniprot ID	RAG2_HUMAN
Immunogen	Recombinant fusion protein containing a sequence corresponding to amino acids 258-527 of human RAG2 (NP_001230715.1).

Immunogen Region

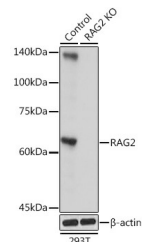
Specificity

Immunogen

Sequence



Western blot analysis of extracts of various cell lines, using RAG2 antibody (STJ27593) at 1:1000 dilution. Secondary antibody; HRP Goat Anti-rabbit IgG (H+L) at 1:10000 dilution. Lysates/proteins: 25ug per lane. Blocking buffer: 3% nonfat dry milk in TBST. Detection: ECL Basic Kit. Exposure time: 90s.



Western blot analysis of extracts from normal (control) and RAG2 rabbit polyclonal antibody knockout (KO) 293T cells, using RAG2 rabbit polyclonal antibody (STJ27593) at 1:500 dilution. Secondary antibody; HRP Goat Anti-rabbit IgG (H+L) at 1:10000 dilution. Lysates/proteins: 25ug per lane. Blocking buffer: 3% nonfat dry milk in TBST. Detection: ECL Basic Kit. Exposure time: 1s.

This product is suitable for in-vitro studies under the RESEARCH USE ONLY [RUO] licence. This product must not be used as for diagnostic or other medical purposes.
St John's Laboratory Ltd, Knowledge Dock Business Centre, University Way, London, E16 2RD | Tel: 0208 223 3081