

Anti-MAP1LC3A/MAP1LC3B antibody (1-121) (STJ27585)

STJ27585

GENERAL INFORMATION

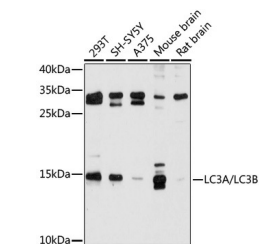
Product Type	Primary antibodies
Short Description	Rabbit polyclonal antibody anti-LC3A/LC3B (1-121) is suitable for use in Western Blot, Immunohistochemistry and Immunofluorescence.
Applications	WB, IHC, IF
Host/Source	Rabbit
Reactivity	Human, Mouse, Rat

PRODUCT PROPERTIES

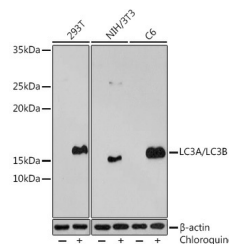
Clonality	Polyclonal
Clone ID	
Concentration	
Conjugation	Unconjugated
Purification	Affinity purification
Dilution Range	WB 1:500-1:2000 IHC 1:50-1:200 IF 1:50-1:200
Formulation	PBS containing 0.02% Sodium Azide, 50% Glycerol, pH7.3.
Isotype	IgG
Storage Instruction	Store in a freezer at -20°C and avoid freeze-thaw cycles.

TARGET INFORMATION

Gene ID	81631 84557
Gene Symbol	MAP1LC3B MAP1LC3A
Uniprot ID	MLP3B_HUMAN MLP3A_HUMAN
Immunogen	Recombinant fusion protein containing a sequence corresponding to amino acids 1-121 of human LC3A (NP_115903.1).
Immunogen Region	1-121
Specificity	
Immunogen Sequence	



Western blot analysis of extracts of various cell lines, using LC3A/LC3B antibody (STJ27585) at 1:500 dilution. Secondary antibody: HRP Goat Anti-rabbit IgG (H+L) at 1:10000 dilution. Lysates/proteins: 25ug per lane. Blocking buffer: 3% nonfat dry milk in TBST. Detection: ECL Basic Kit. Exposure time: 20s.



Western blot analysis of extracts of various cell lines, using LC3A/LC3B antibody (STJ27585) at 1:500 dilution. 293T cells were treated by Chloroquine (50 Mu M) at 37 °C for 20 hours. NIH/3T3 cells were treated by Chloroquine (50 Mu M) at 37 °C for 20 hours. C6 cells were treated by Chloroquine (50 Mu M) at 37 °C for 20 hours. Secondary antibody: HRP Goat Anti-rabbit IgG (H+L) at 1:10000 dilution. Lysates/proteins: 25ug per lane. Blocking buffer: 3% BSA. Detection: ECL Enhanced Kit. Exposure time: 3min.

This product is suitable for in-vitro studies under the RESEARCH USE ONLY [RUO] licence. This product must not be used as for diagnostic or other medical purposes.
St John's Laboratory Ltd, Knowledge Dock Business Centre, University Way, London, E16 2RD | Tel: 0208 223 3081