

## Anti-SH2B1 antibody (360-520) (STJ27510)

STJ27510

### GENERAL INFORMATION

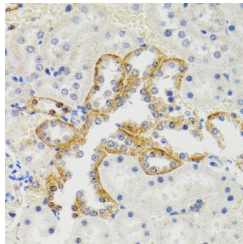
<b>Product Type</b>	Primary antibodies
<b>Short Description</b>	Rabbit polyclonal antibody anti-SH2B1 (360-520) is suitable for use in Immunohistochemistry and Immunofluorescence.
<b>Applications</b>	IHC, IF
<b>Host/Source</b>	Rabbit
<b>Reactivity</b>	Human, Mouse, Rat

### PRODUCT PROPERTIES

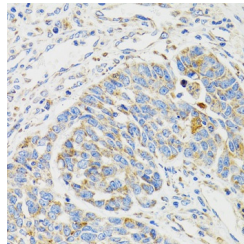
<b>Clonality</b>	Polyclonal
<b>Clone ID</b>	
<b>Concentration</b>	
<b>Conjugation</b>	Unconjugated
<b>Purification</b>	Affinity purification
<b>Dilution Range</b>	IHC 1:50-1:200 IF 1:20-1:50
<b>Formulation</b>	PBS containing 0.02% Sodium Azide, 50% Glycerol, pH7.3.
<b>Isotype</b>	IgG
<b>Storage Instruction</b>	Store in a freezer at -20°C and avoid freeze-thaw cycles.

### TARGET INFORMATION

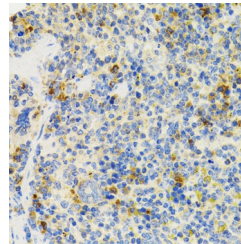
<b>Gene ID</b>	25970
<b>Gene Symbol</b>	SH2B1
<b>Uniprot ID</b>	SH2B1_HUMAN
<b>Immunogen</b>	Recombinant fusion protein containing a sequence corresponding to amino acids 360-520 of human SH2B1 (NP_056318.2).
<b>Immunogen Region</b>	360-520
<b>Specificity</b>	
<b>Immunogen Sequence</b>	



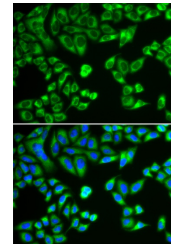
Immunohistochemistry of paraffin-embedded rat kidney using SH2B1 Antibody (STJ27510) at dilution of 1:100 (40x lens).



Immunohistochemistry of paraffin-embedded human esophageal cancer using SH2B1 Antibody (STJ27510) at dilution of 1:100 (40x lens).



Immunohistochemistry of paraffin-embedded mouse spleen using SH2B1 Antibody (STJ27510) at dilution of 1:100 (40x lens).



Immunofluorescence analysis of HeLa cells using SH2B1 antibody (STJ27510). Blue: DAPI for nuclear staining.

This product is suitable for in-vitro studies under the RESEARCH USE ONLY [RUO] licence. This product must not be used as for diagnostic or other medical purposes.  
St John's Laboratory Ltd, Knowledge Dock Business Centre, University Way, London, E16 2RD | Tel: 0208 223 3081