

Anti-CBX6 antibody (80-180) (STJ27484)

STJ27484

GENERAL INFORMATION

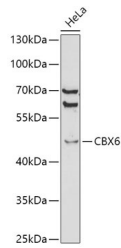
Product Type	Primary antibodies
Short Description	Rabbit polyclonal antibody anti-CBX6 (80-180) is suitable for use in Western Blot and Immunohistochemistry.
Applications	WB, IHC
Host/Source	Rabbit
Reactivity	Human, Mouse, Rat

PRODUCT PROPERTIES

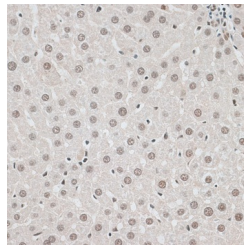
Clonality	Polyclonal
Clone ID	
Concentration	
Conjugation	Unconjugated
Purification	Affinity purification
Dilution Range	WB 1:500-1:2000 IHC 1:50-1:200
Formulation	PBS containing 0.02% Sodium Azide, 50% Glycerol, pH7.3.
Isotype	IgG
Storage Instruction	Store in a freezer at -20°C and avoid freeze-thaw cycles.

TARGET INFORMATION

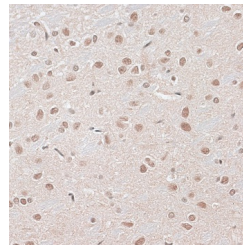
Gene ID	23466
Gene Symbol	CBX6
Uniprot ID	CBX6_HUMAN
Immunogen	Recombinant fusion protein containing a sequence corresponding to amino acids 80-180 of human CBX6 (NP_055107.3).
Immunogen Region	80-180
Specificity	
Immunogen Sequence	



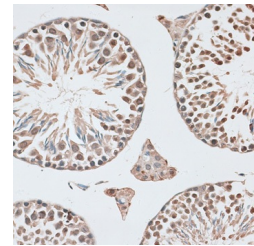
Western blot analysis of extracts of HeLa cells, using CBX6 antibody (STJ27484) at 1:1000 dilution. Secondary antibody: HRP-Coat Anti-rabbit IgG (H+L) at 1:10000 dilution. Lysates/proteins: 25ug per lane. Blocking buffer: 3% nonfat dry milk in TBST. Detection: ECL Basic Kit. Exposure time: 180s.



Immunohistochemistry of paraffin-embedded rat liver using CBX6 antibody (STJ27484) at dilution of 1:100 (40x lens).



Immunohistochemistry of paraffin-embedded rat brain using CBX6 antibody (STJ27484) at dilution of 1:100 (40x lens).



Immunohistochemistry of paraffin-embedded mouse testis using CBX6 antibody (STJ27484) at dilution of 1:100 (40x lens).

This product is suitable for in-vitro studies under the RESEARCH USE ONLY [RUO] licence. This product must not be used as for diagnostic or other medical purposes.
St John's Laboratory Ltd, Knowledge Dock Business Centre, University Way, London, E16 2RD | Tel: 0208 223 3081