

Anti-PPP2R5C antibody (1-320) (STJ27433)

STJ27433

GENERAL INFORMATION

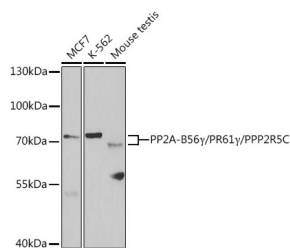
Product Type	Primary antibodies
Short Description	Rabbit polyclonal antibody anti-PPP2R5C (1-320) is suitable for use in Western Blot and Immunohistochemistry.
Applications	WB, IHC
Host/Source	Rabbit
Reactivity	Human, Mouse, Rat

PRODUCT PROPERTIES

Clonality	Polyclonal
Clone ID	
Concentration	
Conjugation	Unconjugated
Purification	Affinity purification
Dilution Range	WB 1:500-1:2000 IHC 1:50-1:200
Formulation	PBS containing 0.02% Sodium Azide, 50% Glycerol, pH7.3.
Isotype	IgG
Storage Instruction	Store in a freezer at -20°C and avoid freeze-thaw cycles.

TARGET INFORMATION

Gene ID	5527
Gene Symbol	PPP2R5C
Uniprot ID	2A5G_HUMAN
Immunogen	Recombinant fusion protein containing a sequence corresponding to amino acids 1-320 of human PP2A-B56 Gamma/PR61 Gamma/PP2A-B56 Gamma/PR61 Gamma/PPP2R5C (NP_848702.1).
Immunogen Region	1-320
Specificity	
Immunogen Sequence	



Western blot analysis of extracts of various cell lines, using PP2A-B56 Gamma/PR61 Gamma/PP2A-B56 Gamma/PR61 Gamma/PPP2R5C antibody (STJ27433) at 1:1000 dilution. Secondary antibody: HRP Goat Anti-rabbit IgG (H+L) at 1:10000 dilution. Lysates/proteins: 25ug per lane. Blocking buffer: 3% nonfat dry milk in TBST. Detection: ECL Basic Kit. Exposure time: 30s.

This product is suitable for in-vitro studies under the RESEARCH USE ONLY [RUO] licence. This product must not be used as for diagnostic or other medical purposes.
St John's Laboratory Ltd, Knowledge Dock Business Centre, University Way, London, E16 2RD | Tel: 0208 223 3081