

Anti-PLA2G1B antibody (23-148) (STJ27431)

STJ27431

GENERAL INFORMATION

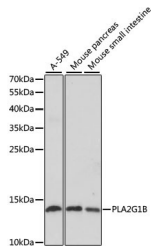
Product Type	Primary antibodies
Short Description	Rabbit polyclonal antibody anti-PLA2G1B (23-148) is suitable for use in Western Blot and Immunohistochemistry.
Applications	WB, IHC
Host/Source	Rabbit
Reactivity	Human, Mouse

PRODUCT PROPERTIES

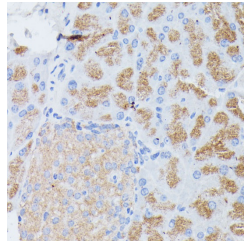
Clonality	Polyclonal
Clone ID	
Concentration	
Conjugation	Unconjugated
Purification	Affinity purification
Dilution Range	WB 1:500-1:2000 IHC 1:100-1:200
Formulation	PBS containing 0.02% Sodium Azide, 50% Glycerol, pH7.3.
Isotype	IgG
Storage Instruction	Store in a freezer at -20°C and avoid freeze-thaw cycles.

TARGET INFORMATION

Gene ID	5319
Gene Symbol	PLA2G1B
Uniprot ID	PA21B_HUMAN
Immunogen	Recombinant fusion protein containing a sequence corresponding to amino acids 23-148 of human PLA2G1B (NP_000919.1).
Immunogen Region	23-148
Specificity	
Immunogen Sequence	



Western blot analysis of extracts of various cell lines, using PLA2G1B antibody (STJ27431) at 1:1000 dilution. Secondary antibody: HRP Goat Anti-rabbit IgG (H+L) at 1:10000 dilution. Lysates/proteins: 25µg per lane. Blocking buffer: 3% nonfat dry milk in TBST. Detection: ECL Enhanced Kit. Exposure time: 90s.



Immunohistochemistry of paraffin-embedded mouse pancreas using PLA2G1B antibody (STJ27431) at dilution of 1:100 (40x lens).