

Anti-MCPH1 antibody (263-562) (STJ27425)

STJ27425

GENERAL INFORMATION

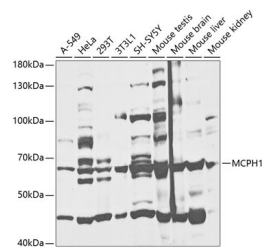
Product Type	Primary antibodies
Short Description	Rabbit polyclonal antibody anti-MCPH1 (263-562) is suitable for use in Western Blot.
Applications	WB
Host/Source	Rabbit
Reactivity	Human, Mouse

PRODUCT PROPERTIES

Clonality	Polyclonal
Clone ID	
Concentration	
Conjugation	Unconjugated
Purification	Affinity purification
Dilution Range	WB 1:500-1:2000
Formulation	PBS containing 0.02% Sodium Azide, 50% Glycerol, pH7.3.
Isotype	IgG
Storage Instruction	Store in a freezer at -20°C and avoid freeze-thaw cycles.

TARGET INFORMATION

Gene ID	79648
Gene Symbol	MCPH1
Uniprot ID	MCPH1_HUMAN
Immunogen	Recombinant fusion protein containing a sequence corresponding to amino acids 263-562 of human MCPH1 (NP_001166046.1).
Immunogen Region	263-562
Specificity	
Immunogen Sequence	



Western blot analysis of extracts of various cell lines, using MCPH1 antibody (STJ27425) at 1:1000 dilution. Secondary antibody: HRP Goat Anti-rabbit IgG (H+L) at 1:10000 dilution. Lysates/proteins: 25µg per lane. Blocking buffer: 3% nonfat dry milk in TBST.