

Anti-MB antibody (1-1) (STJ27424)

STJ27424

GENERAL INFORMATION

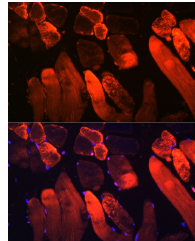
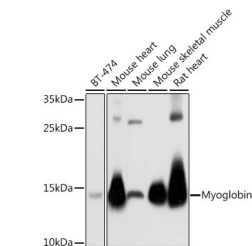
Product Type	Primary antibodies
Short Description	Rabbit polyclonal antibody anti-MB (1-1) is suitable for use in Western Blot and Immunofluorescence.
Applications	WB, IF
Host/Source	Rabbit
Reactivity	Human, Mouse, Rat

PRODUCT PROPERTIES

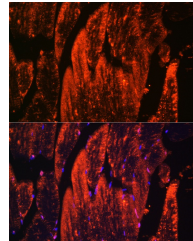
Clonality	Polyclonal
Clone ID	
Concentration	
Conjugation	Unconjugated
Purification	Affinity purification
Dilution Range	WB 1:500-1:2000 IF 1:50-1:200
Formulation	PBS containing 0.02% Sodium Azide, 50% Glycerol, pH7.3.
Isotype	IgG
Storage Instruction	Store in a freezer at -20°C and avoid freeze-thaw cycles.

TARGET INFORMATION

Gene ID	4151
Gene Symbol	MB
Uniprot ID	MYG_HUMAN
Immunogen	RecoMyoglobin inant fusion protein containing a sequence corresponding to amino acids 1-1-154 of human Myoglobin (NP_005359.1).
Immunogen Region	1-1
Specificity	
Immunogen Sequence	



Immunofluorescence analysis of rat skeletal muscle cells using Myoglobin rabbit polyclonal antibody (STJ27424) at dilution of 1:300 (40x lens). Blue: DAPI for nuclear staining.



Immunofluorescence analysis of mouse skeletal muscle cells using Myoglobin rabbit polyclonal antibody (STJ27424) at dilution of 1:300 (40x lens). Blue: DAPI for nuclear staining.

This product is suitable for in-vitro studies under the RESEARCH USE ONLY [RUO] licence. This product must not be used as for diagnostic or other medical purposes.
St John's Laboratory Ltd, Knowledge Dock Business Centre, University Way, London, E16 2RD | Tel: 0208 223 3081