

Anti-FOSL1 antibody (1-100) (STJ27325)

STJ27325

GENERAL INFORMATION

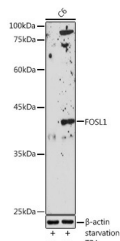
Product Type	Primary antibodies
Short Description	Rabbit polyclonal antibody anti-FOSL1 (1-100) is suitable for use in Western Blot, Immunohistochemistry and Immunofluorescence.
Applications	WB, IHC, IF
Host/Source	Rabbit
Reactivity	Human, Mouse, Rat

PRODUCT PROPERTIES

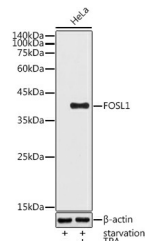
Clonality	Polyclonal
Clone ID	
Concentration	
Conjugation	Unconjugated
Purification	Affinity purification
Dilution Range	WB 1:500-1:2000 IHC 1:50-1:200 IF 1:50-1:100
Formulation	PBS containing 0.02% Sodium Azide, 50% Glycerol, pH7.3.
Isotype	IgG
Storage Instruction	Store in a freezer at -20°C and avoid freeze-thaw cycles.

TARGET INFORMATION

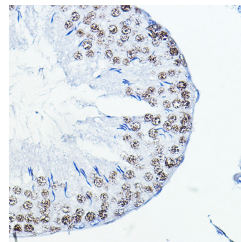
Gene ID	8061
Gene Symbol	FOSL1
Uniprot ID	FOSL1_HUMAN
Immunogen	Recombinant fusion protein containing a sequence corresponding to amino acids 1-100 of human FOSL1 (NP_005429.1).
Immunogen Region	1-100
Specificity	
Immunogen Sequence	



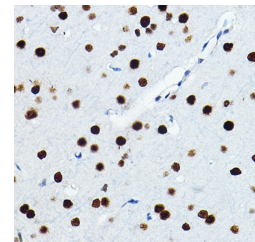
Western blot analysis of extracts of C6 cells, using FOSL1 antibody (STJ27325) at 1:1000 dilution. C6 cells were treated by PMA/TPA (200 nM) at 37 °C for 15 minutes after serum-starvation overnight. Secondary antibody: HRP Goat Anti-rabbit IgG (H+L) at 1:10000 dilution. Lysates/proteins: 25µg per lane. Blocking buffer: 3% nonfat dry milk in TBST. Detection: ECL Enhanced Kit. Exposure time: 180s.



Western blot analysis of extracts of HeLa cells, using FOSL1 antibody (STJ27325) at 1:1000 dilution. HeLa cells were treated by PMA/TPA (200 nM) at 37 °C for 15 minutes after serum-starvation overnight. Secondary antibody: HRP Goat Anti-rabbit IgG (H+L) at 1:10000 dilution. Lysates/proteins: 25µg per lane. Blocking buffer: 3% nonfat dry milk in TBST. Detection: ECL Basic Kit. Exposure time: 90s.



Immunohistochemistry of paraffin-embedded rat testis using FOSL1 rabbit polyclonal antibody (STJ27325) at dilution of 1:100 (40x lens).



Immunohistochemistry of paraffin-embedded rat brain using FOSL1 rabbit polyclonal antibody (STJ27325) at dilution of 1:100 (40x lens).

This product is suitable for in-vitro studies under the RESEARCH USE ONLY [RUO] licence. This product must not be used as for diagnostic or other medical purposes.
St John's Laboratory Ltd, Knowledge Dock Business Centre, University Way, London, E16 2RD | Tel: 0208 223 3081