

Anti-TCEB2 antibody (1-118) (STJ27315)

STJ27315

GENERAL INFORMATION

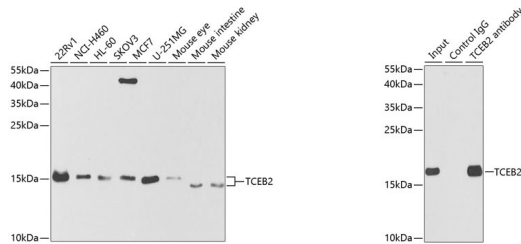
Product Type	Primary antibodies
Short Description	Rabbit polyclonal antibody anti-TCEB2 (1-118) is suitable for use in Western Blot and Immunoprecipitation.
Applications	WB, IP
Host/Source	Rabbit
Reactivity	Human, Mouse

PRODUCT PROPERTIES

Clonality	Polyclonal
Clone ID	
Concentration	
Conjugation	Unconjugated
Purification	Affinity purification
Dilution Range	WB 1:500-1:2000 IP 1:20-1:50
Formulation	PBS containing 0.02% Sodium Azide, 50% Glycerol, pH7.3.
Isotype	IgG
Storage Instruction	Store in a freezer at -20°C and avoid freeze-thaw cycles.

TARGET INFORMATION

Gene ID	6923
Gene Symbol	ELOB
Uniprot ID	ELOB_HUMAN
Immunogen	Recombinant fusion protein containing a sequence corresponding to amino acids 1-118 of human TCEB2 (NP_009039.1).
Immunogen Region	1-118
Specificity	
Immunogen Sequence	



Western blot analysis of extracts of various cell lines, using TCEB2 antibody (STJ27315) at 1:1000 dilution. Secondary antibody: HRP Goat Anti-rabbit IgG (H+L) at 1:10000 dilution. Lysates/proteins: 25ug per lane. Blocking buffer: 3% nonfat dry milk in TBST. Detection: ECL Basic Kit. Exposure time: 90s.

Immunoprecipitation analysis of 150ug extracts of MCF7 cells using 3ug TCEB2 antibody (STJ27315). Western blot was performed from the immunoprecipitate using TCEB2 antibody (STJ27315) at a dilution of 1:500.

This product is suitable for in-vitro studies under the RESEARCH USE ONLY [RUO] licence. This product must not be used as for diagnostic or other medical purposes.
St John's Laboratory Ltd, Knowledge Dock Business Centre, University Way, London, E16 2RD | Tel: 0208 223 3081