

Anti-S100A12 antibody (1-92) (STJ27281)

STJ27281

GENERAL INFORMATION

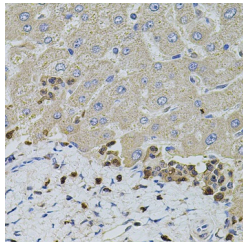
| | |
|--------------------------|--|
| Product Type | Primary antibodies |
| Short Description | Rabbit polyclonal antibody anti-S100A12 (1-92) is suitable for use in Western Blot, Immunohistochemistry and Immunofluorescence. |
| Applications | WB, IHC, IF |
| Host/Source | Rabbit |
| Reactivity | Human, Mouse, Rat |

PRODUCT PROPERTIES

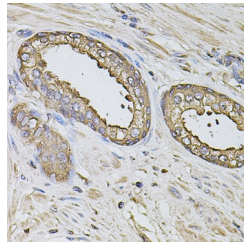
| | |
|----------------------------|---|
| Clonality | Polyclonal |
| Clone ID | |
| Concentration | |
| Conjugation | Unconjugated |
| Purification | Affinity purification |
| Dilution Range | WB 1:500-1:2000 IHC 1:50-1:200 IF 1:50-1:200 |
| Formulation | PBS containing 0.02% Sodium Azide, 50% Glycerol, pH7.3. |
| Isotype | IgG |
| Storage Instruction | Store in a freezer at -20°C and avoid freeze-thaw cycles. |

TARGET INFORMATION

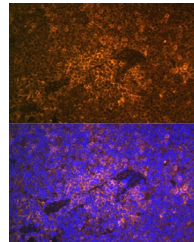
| | |
|---------------------------|--|
| Gene ID | 6283 |
| Gene Symbol | S100A12 |
| Uniprot ID | S100AC_HUMAN |
| Immunogen | Recombinant fusion protein containing a sequence corresponding to amino acids 1-92 of human S100A12 (NP_005612.1). |
| Immunogen Region | 1-92 |
| Specificity | |
| Immunogen Sequence | |



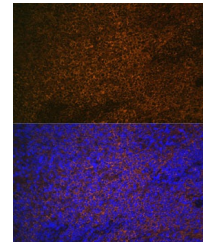
Immunohistochemistry of paraffin-embedded human liver damage using S100A12 antibody (STJ27281) at dilution of 1:100 (40x lens).



Immunohistochemistry of paraffin-embedded human prostate using S100A12 antibody (STJ27281) at dilution of 1:100 (40x lens).



Immunofluorescence analysis of mouse spleen using S100A12 rabbit polyclonal antibody (STJ27281) at dilution of 1:100. Blue: DAPI for nuclear staining.



Immunofluorescence analysis of Rat spleen using S100A12 rabbit polyclonal antibody (STJ27281) at dilution of 1:100. Blue: DAPI for nuclear staining.

This product is suitable for in-vitro studies under the RESEARCH USE ONLY [RUO] licence. This product must not be used as for diagnostic or other medical purposes.
St John's Laboratory Ltd, Knowledge Dock Business Centre, University Way, London, E16 2RD | Tel: 0208 223 3081