

Anti-RACGAP1 antibody (353-632) (STJ27251)

STJ27251

GENERAL INFORMATION

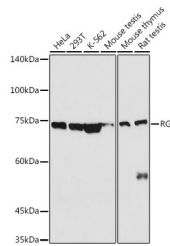
Product Type	Primary antibodies
Short Description	Rabbit polyclonal antibody anti-RACGAP1 (353-632) is suitable for use in Western Blot, Immunohistochemistry and Immunofluorescence.
Applications	WB, IHC, IF
Host/Source	Rabbit
Reactivity	Human, Mouse, Rat

PRODUCT PROPERTIES

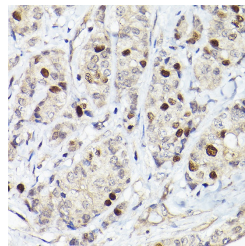
Clonality	Polyclonal
Clone ID	
Concentration	
Conjugation	Unconjugated
Purification	Affinity purification
Dilution Range	WB 1:500-1:2000 IHC 1:50-1:200 IF 1:50-1:200
Formulation	PBS containing 0.02% Sodium Azide, 50% Glycerol, pH7.3.
Isotype	IgG
Storage Instruction	Store in a freezer at -20°C and avoid freeze-thaw cycles.

TARGET INFORMATION

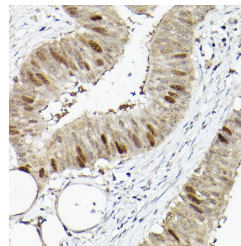
Gene ID	29127
Gene Symbol	RACGAP1
Uniprot ID	RGAP1_HUMAN
Immunogen	Recombinant fusion protein containing a sequence corresponding to amino acids 353-632 of human RGAP1 (NP_001119576.1).
Immunogen Region	353-632
Specificity	
Immunogen Sequence	



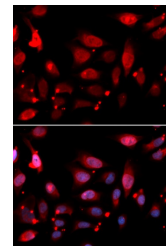
Western blot analysis of extracts of various cell lines, using RGAP1 antibody (STJ27251) at 1:500 dilution. Secondary antibody: HRP Goat Anti-rabbit IgG (H+L) at 1:10000 dilution. Lysates/proteins: 25µg per lane. Blocking buffer: 3% nonfat dry milk in TBST. Detection: ECL Basic Kit. Exposure time: 180s.



Immunohistochemistry of paraffin-embedded human breast cancer using RGAP1 rabbit polyclonal antibody (STJ27251) at dilution of 1:50 (40x lens).



Immunohistochemistry of paraffin-embedded human colon carcinoma using RGAP1 rabbit polyclonal antibody (STJ27251) at dilution of 1:50 (40x lens).



Immunofluorescence analysis of U2OS cells using RGAP1 antibody (STJ27251). Blue: DAPI for nuclear staining.