

Anti-EIF4A1 antibody (1-406) (STJ27247)

STJ27247

GENERAL INFORMATION

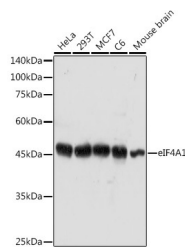
Product Type	Primary antibodies
Short Description	Rabbit polyclonal antibody anti-EIF4A1 (1-406) is suitable for use in Western Blot, Immunofluorescence and Immunoprecipitation.
Applications	WB, IF, IP
Host/Source	Rabbit
Reactivity	Human, Mouse, Rat

PRODUCT PROPERTIES

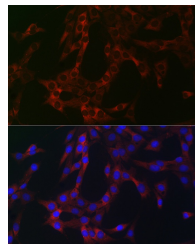
Clonality	Polyclonal
Clone ID	
Concentration	
Conjugation	Unconjugated
Purification	Affinity purification
Dilution Range	WB 1:500-1:2000 IF 1:20-1:50 IP 1:20-1:50
Formulation	PBS containing 0.02% Sodium Azide, 50% Glycerol, pH7.3.
Isotype	IgG
Storage Instruction	Store in a freezer at -20°C and avoid freeze-thaw cycles.

TARGET INFORMATION

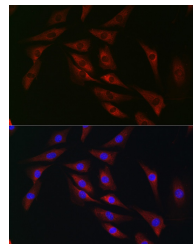
Gene ID	1973
Gene Symbol	EIF4A1
Uniprot ID	IF4A1_HUMAN
Immunogen	Recombinant fusion protein containing a sequence corresponding to amino acids 1-406 of human eIF4A1 (NP_001407.1).
Immunogen Region	1-406
Specificity	
Immunogen Sequence	



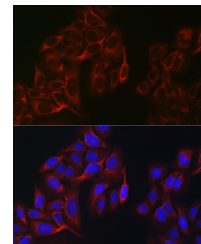
Western blot analysis of extracts of various cell lines, using eIF4A1 antibody (STJ27247) at 1:1000 dilution. Secondary antibody: HRP Goat Anti-rabbit IgG (H+L) at 1:10000 dilution, lysates/proteins: 25µg per lane. Blocking buffer: 3% nonfat dry milk in TBST. Detection: ECL Basic Kit. Exposure time: 180s.



Immunofluorescence analysis of C6 cells using eIF4A1 rabbit polyclonal antibody (STJ27247) at dilution of 1:100 (40x lens). Blue: DAPI for nuclear staining.



Immunofluorescence analysis of NIH/3T3 cells using eIF4A1 rabbit polyclonal antibody (STJ27247) at dilution of 1:100 (40x lens). Blue: DAPI for nuclear staining.



Immunofluorescence analysis of U2OS cells using eIF4A1 rabbit polyclonal antibody (STJ27247) at dilution of 1:100 (40x lens). Blue: DAPI for nuclear staining.