

## Anti-TERF1 antibody (STJ27246)

STJ27246

### GENERAL INFORMATION

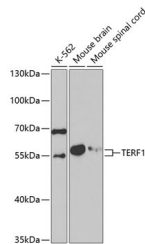
<b>Product Type</b>	Primary antibodies
<b>Short Description</b>	Rabbit polyclonal anti-TERF1 antibody is suitable for use in Western Blot and Immunofluorescence.
<b>Background</b>	
<b>Applications</b>	WB, IF
<b>Host/Source</b>	Rabbit
<b>Reactivity</b>	Human, Mouse

### PRODUCT PROPERTIES

<b>Clonality</b>	Polyclonal
<b>Clone ID</b>	
<b>Concentration</b>	
<b>Conjugation</b>	Unconjugated
<b>Purification</b>	Affinity purification
<b>Dilution Range</b>	WB: 1:500-1:2000 IF: 1:50-1:200
<b>Formulation</b>	PBS with 0.02% sodium azide, 50% glycerol, pH7.3.
<b>Isotype</b>	IgG
<b>Storage Instruction</b>	Store at -20°C. Avoid freeze/thaw cycles.

### TARGET INFORMATION

<b>Gene ID</b>	7013
<b>Gene Symbol</b>	TERF1
<b>Uniprot ID</b>	TERF1_HUMAN
<b>Immunogen</b>	Recombinant fusion protein containing a sequence corresponding to amino acids 240-419 of human TERF1 (NP_003209.2).
<b>Immunogen Region</b>	
<b>Specificity</b>	
<b>Immunogen Sequence</b>	



Western blot analysis of extracts of various cell lines, using TERF1 antibody (STJ27246) at 1:1000 dilution. Secondary antibody: HRP-Goat Anti-Rabbit IgG (H+L) at 1:10000 dilution. Lysates/proteins: 25µg per lane. Blocking buffer: 3% nonfat dry milk in TBST.

This product is suitable for in-vitro studies under the RESEARCH USE ONLY [RUO] licence. This product must not be used as for diagnostic or other medical purposes.  
St John's Laboratory Ltd, Knowledge Dock Business Centre, University Way, London, E16 2RD | Tel: 0208 223 3081 | Fax: 0207 681 2580