

Anti-MAGT1 antibody (60-220) (STJ27042)

STJ27042

GENERAL INFORMATION

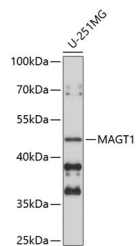
Product Type	Primary antibodies
Short Description	Rabbit polyclonal antibody anti-MAGT1 (60-220) is suitable for use in Western Blot.
Applications	WB
Host/Source	Rabbit
Reactivity	Human

PRODUCT PROPERTIES

Clonality	Polyclonal
Clone ID	
Concentration	
Conjugation	Unconjugated
Purification	Affinity purification
Dilution Range	WB 1:500-1:1000
Formulation	PBS containing 0.02% Sodium Azide, 50% Glycerol, pH7.3.
Isotype	IgG
Storage Instruction	Store in a freezer at -20°C and avoid freeze-thaw cycles.

TARGET INFORMATION

Gene ID	84061
Gene Symbol	MAGT1
Uniprot ID	MAGT1_HUMAN
Immunogen	Recombinant fusion protein containing a sequence corresponding to amino acids 60-220 of human MAGT1 (NP_115497.4).
Immunogen Region	60-220
Specificity	
Immunogen Sequence	



Western blot analysis of extracts of U-251MG cells, using MAGT1 antibody (STJ27042) at 1:1000 dilution. Secondary antibody: HRP Goat Anti-rabbit IgG (H+L) at 1:10000 dilution. Lysates/proteins: 25µg per lane. Blocking buffer: 3% nonfat dry milk in TBST. Detection: ECL Basic Kit. Exposure time: 90s.