

Anti-ARG1 antibody (1-322) (STJ26182)

STJ26182

GENERAL INFORMATION

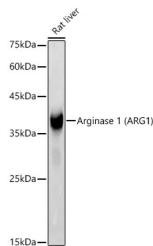
Product Type	Primary antibodies
Short Description	Rabbit polyclonal antibody anti-ARG1/Arginase 1 (1-322) is suitable for use in Western Blot, Immunohistochemistry and Immunofluorescence.
Applications	WB, IHC, IF
Host/Source	Rabbit
Reactivity	Human, Mouse, Rat

PRODUCT PROPERTIES

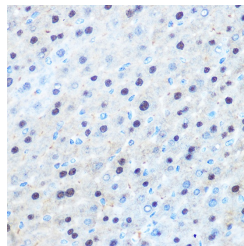
Clonality	Polyclonal
Clone ID	
Concentration	
Conjugation	Unconjugated
Purification	Affinity purification
Dilution Range	WB 1:500-1:2000 IHC 1:50-1:200 IF 1:50-1:200
Formulation	PBS containing 0.02% Sodium Azide, 50% Glycerol, pH7.3.
Isotype	IgG
Storage Instruction	Store in a freezer at -20°C and avoid freeze-thaw cycles.

TARGET INFORMATION

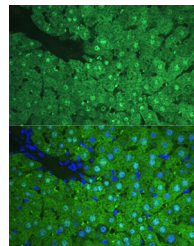
Gene ID	383
Gene Symbol	ARG1
Uniprot ID	ARG1_HUMAN
Immunogen	Recombinant fusion protein containing a sequence corresponding to amino acids 1-322 of human Arginase 1 (ARG1) (NP_000036.2).
Immunogen Region	1-322
Specificity	
Immunogen Sequence	



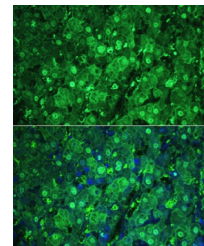
Western blot analysis of extracts of Rat liver, using Arginase 1 (ARG1) antibody (STJ26182) at 1:500 dilution. Secondary antibody: HRP Goat Anti-rabbit IgG (H+L) at 1:10000 dilution. Lysates/proteins: 25ug per lane. Blocking buffer: 3% nonfat dry milk in TBST. Detection: ECL Basic Kit. Exposure time: 0.4s.



Immunohistochemistry of paraffin-embedded mouse liver using Arginase 1 (ARG1) rabbit polyclonal antibody (STJ26182) at dilution of 1:100 (40x lens). Perform microwave antigen retrieval with 10 mM Tris/EDTA buffer pH 9.0 before commencing with immunohistochemistry staining protocol.



Immunofluorescence analysis of Rat liver using Arginase 1 (ARG1) antibody (STJ26182) at dilution of 1:100. Blue: DAPI for nuclear staining.



Immunofluorescence analysis of Human liver using Arginase 1 (ARG1) antibody (STJ26182) at dilution of 1:100. Blue: DAPI for nuclear staining.