

Anti-MAD2L1 antibody (1-205) (STJ26174)

STJ26174

GENERAL INFORMATION

Product Type	Primary antibodies
Short Description	Rabbit polyclonal antibody anti-MAD2L1 (1-205) is suitable for use in Western Blot and Immunofluorescence.
Applications	WB, IF
Host/Source	Rabbit
Reactivity	Human

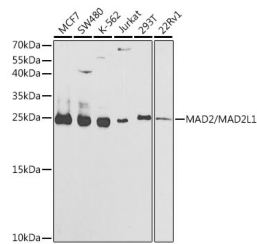
PRODUCT PROPERTIES

Clonality	Polyclonal
Clone ID	
Concentration	
Conjugation	Unconjugated
Purification	Affinity purification
Dilution Range	WB 1:500-1:2000 IF 1:50-1:200
Formulation	PBS containing 0.02% Sodium Azide, 50% Glycerol, pH7.3.
Isotype	IgG
Storage Instruction	Store in a freezer at -20°C and avoid freeze-thaw cycles.

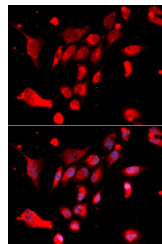
TARGET INFORMATION

Gene ID	4085
Gene Symbol	MAD2L1
Uniprot ID	MD2L1_HUMAN
Immunogen	Recombinant fusion protein containing a sequence corresponding to amino acids 1-205 of human MAD2/MAD2/MAD2L1 (NP_002349.1).

Immunogen Region
1-205
Specificity
Immunogen
Sequence



Western blot analysis of extracts of various cell lines, using MAD2/MAD2/MAD2L1 antibody (STJ26174) at 1:1000 dilution. Secondary antibody: HRP Goat Anti-rabbit IgG (H+L) at 1:10000 dilution. Lysates/proteins: 25µg per lane. Blocking buffer: 3% nonfat dry milk in TBST. Detection: ECL Basic Kit. Exposure time: 90s.



Immunofluorescence analysis of U2OS cells using MAD2/MAD2/MAD2L1 antibody (STJ26174). Blue: DAPI for nuclear staining.

This product is suitable for in-vitro studies under the RESEARCH USE ONLY [RUO] licence. This product must not be used as for diagnostic or other medical purposes.
St John's Laboratory Ltd, Knowledge Dock Business Centre, University Way, London, E16 2RD | Tel: 0208 223 3081