

Anti-ZYX antibody (1-300) (STJ26156)

STJ26156

GENERAL INFORMATION

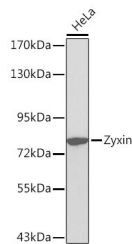
Product Type	Primary antibodies
Short Description	Rabbit polyclonal antibody anti-ZYX (1-300) is suitable for use in Western Blot, Immunohistochemistry and Immunofluorescence.
Applications	WB, IHC, IF
Host/Source	Rabbit
Reactivity	Human, Mouse, Rat

PRODUCT PROPERTIES

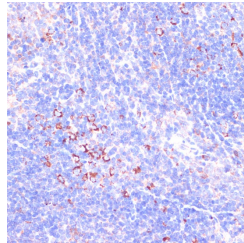
Clonality	Polyclonal
Clone ID	
Concentration	
Conjugation	Unconjugated
Purification	Affinity purification
Dilution Range	WB 1:500-1:2000 IHC 1:50-1:200 IF 1:50-1:200
Formulation	PBS containing 0.02% Sodium Azide, 50% Glycerol, pH7.3.
Isotype	IgG
Storage Instruction	Store in a freezer at -20°C and avoid freeze-thaw cycles.

TARGET INFORMATION

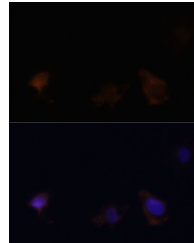
Gene ID	7791
Gene Symbol	ZYX
Uniprot ID	ZYX_HUMAN
Immunogen	Recombinant fusion protein containing a sequence corresponding to amino acids 1-300 of human Zyxinin (NP_001010972.1).
Immunogen Region	1-300
Specificity	
Immunogen Sequence	



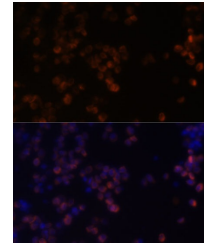
Western blot analysis of extracts of HeLa cells, using Zyxinin antibody (STJ26156). Secondary antibody: HRP Goat Anti-rabbit IgG (H+L) at 1:10000 dilution. Lysates/proteins: 25µg per lane. Blocking buffer: 3% nonfat dry milk in TBST.



Immunohistochemistry of paraffin-embedded mouse spleen using Zyxinin antibody (STJ26156) at dilution of 1:100 (40x lens).



Immunofluorescence analysis of C6 cells using Zyxinin antibody (STJ26156) at dilution of 1:100. Blue: DAPI for nuclear staining.



Immunofluorescence analysis of Raw264.7 cells using Zyxinin antibody (STJ26156) at dilution of 1:100. Blue: DAPI for nuclear staining.

This product is suitable for in-vitro studies under the RESEARCH USE ONLY [RUO] licence. This product must not be used as for diagnostic or other medical purposes.
St John's Laboratory Ltd, Knowledge Dock Business Centre, University Way, London, E16 2RD | Tel: 0208 223 3081