

Anti-WFS1 antibody (1-285) (STJ26110)

STJ26110

GENERAL INFORMATION

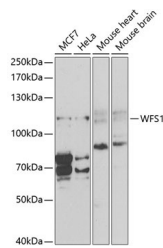
Product Type	Primary antibodies
Short Description	Rabbit polyclonal antibody anti-WFS1 (1-285) is suitable for use in Western Blot and Immunofluorescence.
Applications	WB, IF
Host/Source	Rabbit
Reactivity	Human, Mouse

PRODUCT PROPERTIES

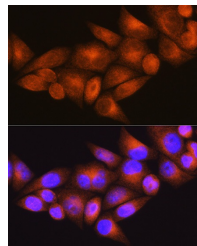
Clonality	Polyclonal
Clone ID	
Concentration	
Conjugation	Unconjugated
Purification	Affinity purification
Dilution Range	WB 1:500-1:2000 IF 1:50-1:200
Formulation	PBS containing 0.02% Sodium Azide, 50% Glycerol, pH7.3.
Isotype	IgG
Storage Instruction	Store in a freezer at -20°C and avoid freeze-thaw cycles.

TARGET INFORMATION

Gene ID	7466
Gene Symbol	WFS1
Uniprot ID	WFS1_HUMAN
Immunogen	Recombinant fusion protein containing a sequence corresponding to amino acids 1-285 of human WFS1 (NP_001139325.1).
Immunogen Region	1-285
Specificity	
Immunogen Sequence	



Western blot analysis of extracts of various cell lines, using WFS1 antibody (STJ26110) at 1:1000 dilution. Secondary antibody: HRP Goat Anti-rabbit IgG (H+L) at 1:10000 dilution. Lysates/proteins: 25µg per lane. Blocking buffer: 3% nonfat dry milk in TBST.



Immunofluorescence analysis of HeLa cells using WFS1 rabbit polyclonal antibody (STJ26110) at dilution of 1:100 (40x lens). Blue: DAPI for nuclear staining.